

MØNSTRINGSSTATISTIK DIS

BASERET PÅ SFS NY OPSTILLING 2013

- Noter:**
1. Grøn farve indikerer at kategorien ikke er oplyst i den pågældende statistik
 2. 16/12-2013: alle excel-beregne Total-tal kontrolleret med total-tal SFS-opstillinger.

Alle tal 30-09 det pågældende år

A

TOTAL

	DK	EU/EØS	Andre	EU+andre	Incl. Pax.		TOTAL
					Total	Ikke indl	
2000	3649	395	2560	2955	6604	227	6831
2001	3516	392	2436	2828	6344	314	6658
2002	3647	458	2271	2729	6376	229	6605
2003	3483	453	2454	2907	6390	250	6640
2004	3478	919	2044	2963	6441	233	6674
2005	3320	932	2266	3198	6518	243	6761
2006	3284	1023	2731	3754	7038	259	7297
2007	2871	976	2992	3968	6839	375	7214
2008	2955	1025	3764	4789	7744	467	8211
2009	2817	907	3936	4843	7660	457	8117
2010	2840	1096	4184	5280	8120	351	8471
2011	2882	1371	4792	6163	9045	176	9221
2012	2632	1460	4241	5701	8333	225	8558
2013							
2014							
2015							
2016							

B

PASSAGERSKIBE - ANSLÅET ("konstant")

Total

	DK	EU/EØS	Andre	EU+andre	Total	SKIBE	
2000	691	324	97	421	1112	24	
2001	650	325	98	423	1073	19	
2002	780	378	103	481	1261	21	
2003	809	382	105	487	1296	21	
2004	794	310	109	419	1213	23	
2005	799	310	109	419	1218	25	
2006	743	351	169	520	1263	26	
2007	691	375	216	591	1282	25	
2008	712	375	216	591	1303	25	
2009	713	375	216	591	1304	25	
2010	678	283	214	497	1175	25	
2011	660	340	160	500	1160	27	
2012	575	310	184	494	1069		
2013							
2014							
2015							
2016							

C

Officerer

	DK	EU/EØS	Andre	EU+andre	Total	SKIBE	
2000	167	6	0	6	173	24	
2001	145	6	0	6	151	19	
2002	159	6	0	6	165	21	
2003	158	7	0	7	165	21	
2004	168	7	2	9	177	23	
2005	166	7	2	9	175	25	
2006	163	7	4	11	174	26	
2007	155	8	3	11	166	25	
2008	162	8	3	11	173	25	
2009	163	8	3	11	174	25	
2010	156	8	3	11	167	25	
2011	186	34	4	38	224	27	
2012	180	27	10	37	217		
2013	202	19	8	27	229		
2014							
2015							
2016							

D

Menige	DK	EU/EØS	Andre	EU+andre	Total	SKIBE
2000	524	318	97	415	939	24
2001	505	319	98	417	922	19
2002	621	372	103	475	1096	21
2003	651	375	105	480	1131	21
2004	626	303	107	410	1036	23
2005	633	303	107	410	1043	25
2006	580	344	165	509	1089	26
2007	536	367	213	580	1116	25
2008	550	367	213	580	1130	25
2009	550	367	213	580	1130	25
2010	522	275	211	486	1008	25
2011	474	306	156	462	936	27
2012	395	283	174	457	852	
2013	522	294	136	430	952	
2014						
2015						
2016						

E

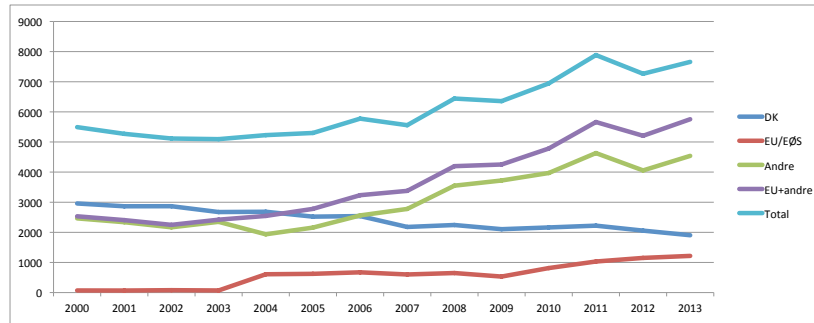
IKKE INDBERETTET - ANSLÅET

	DK	EU/EØS	Andre	EU+andre	Total
2000					227
2001					314
2002					229
2003					250
2004					233
2005					243
2006					259
2007					375
2008					467
2009					457
2010					351
2011					176
2012					225
2013					100 ?
2014					
2015					
2016					

1

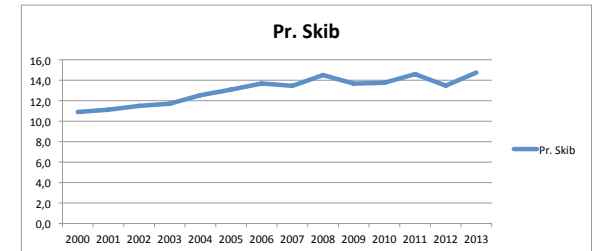
MØNSTREDE (FRAGTSKIBE)

Total	DK	EU/EØS	Andre	EU+andre	Total	SKIBE
2000	2958	71	2463	2534	5492	504
2001	2866	67	2338	2405	5271	474
2002	2867	80	2168	2248	5115	445
2003	2674	71	2349	2420	5094	435
2004	2684	609	1935	2544	5228	417
2005	2521	622	2157	2779	5300	405
2006	2541	672	2562	3234	5775	422
2007	2180	601	2776	3377	5557	413
2008	2243	650	3548	4198	6441	444
2009	2104	532	3720	4252	6356	465
2010	2162	813	3970	4783	6945	505
2011	2222	1031	4632	5663	7885	540
2012	2057	1150	4057	5207	7264	539
2013	1904	1217	4538	5755	7659	519
2014						
2015						
2016						



Pr. Skib

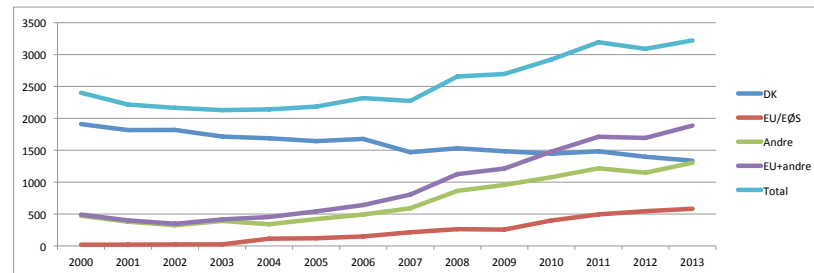
2000	10,9
2001	11,1
2002	11,5
2003	11,7
2004	12,5
2005	13,1
2006	13,7
2007	13,5
2008	14,5
2009	13,7
2010	13,8
2011	14,6
2012	13,5
2013	14,8



2

NAVIGATIONS- OG MASKINOFFICER

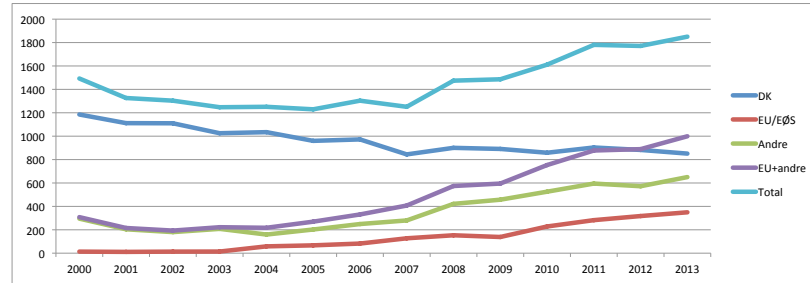
	DK	EU/EØS	Andre	EU+andre	Total	SKIBE
2000	1910	19	472	491	2401	504
2001	1816	20	380	400	2216	474
2002	1818	23	324	347	2165	445
2003	1714	24	391	415	2129	435
2004	1687	113	340	453	2140	417
2005	1643	120	421	541	2184	405
2006	1677	149	492	641	2318	422
2007	1470	214	590	804	2274	413
2008	1531	263	862	1125	2656	444
2009	1484	256	956	1212	2696	465
2010	1446	399	1078	1477	2923	505
2011	1483	494	1217	1711	3194	540
2012	1397	545	1148	1693	3090	539
2013	1336	582	1304	1886	3222	519
2014						
2015						
2016						



3

Navigationsofficerer

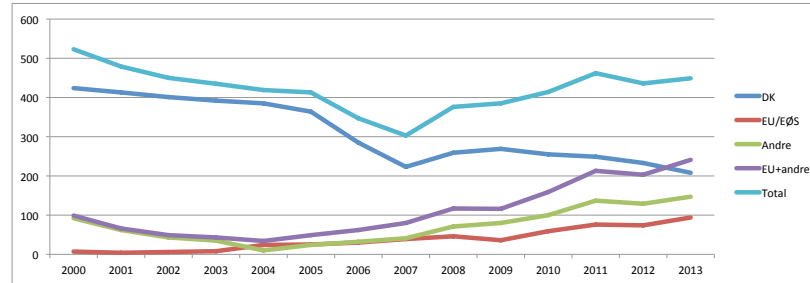
	DK	EU/EØS	Andre	EU+andre	Total	SKIBE
2000	1185	13	295	308	1493	504
2001	1111	11	204	215	1326	474
2002	1110	13	180	193	1303	445
2003	1025	14	208	222	1247	435
2004	1034	58	159	217	1251	417
2005	960	67	202	269	1229	405
2006	972	82	249	331	1303	422
2007	844	127	280	407	1251	413
2008	900	153	421	574	1474	444
2009	891	138	457	595	1486	465
2010	858	228	525	753	1611	505
2011	903	282	595	877	1780	540
2012	882	317	572	889	1771	539
2013	851	349	650	999	1850	519
2014						
2015						
2016						



4

Overstyrmand

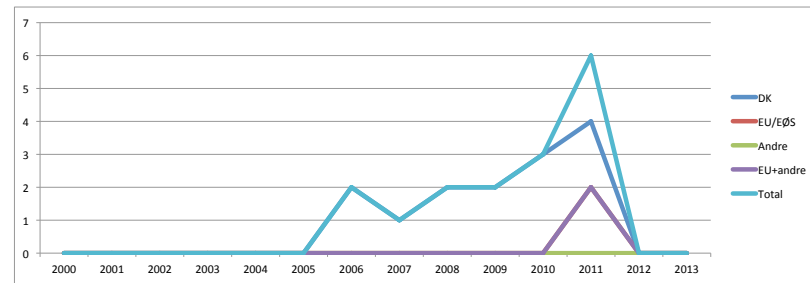
	DK	EU/EØS	Andre	EU+andre	Total	SKIBE
2000	424	7	92	99	523	504
2001	413	4	62	66	479	474
2002	401	6	43	49	450	445
2003	392	8	35	43	435	435
2004	385	24	10	34	419	417
2005	364	25	24	49	413	405
2006	285	30	32	62	347	422
2007	223	39	41	80	303	413
2008	259	46	71	117	376	444
2009	269	36	80	116	385	465
2010	255	59	100	159	414	505
2011	249	76	137	213	462	540
2012	233	74	129	203	436	539
2013	208	94	147	241	449	519
2014						
2015						
2016						



5

Enestyrmmand

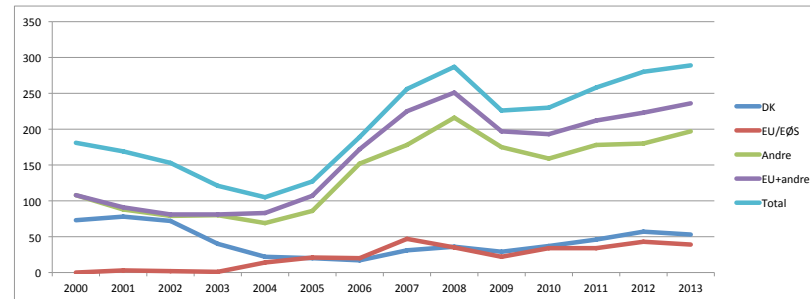
	DK	EU/EØS	Andre	EU+andre	Total	SKIBE
2000	0	0	0	0	0	504
2001	0	0	0	0	0	474
2002	0	0	0	0	0	445
2003	0	0	0	0	0	435
2004	0	0	0	0	0	417
2005	0	0	0	0	0	405
2006	2	0	0	0	2	422
2007	1	0	0	0	1	413
2008	2	0	0	0	2	444
2009	2	0	0	0	2	465
2010	3	0	0	0	3	505
2011	4	2	0	2	6	540
2012	0	0	0	0	0	539
2013	0	0	0	0	0	519
2014						
2015						
2016						



6

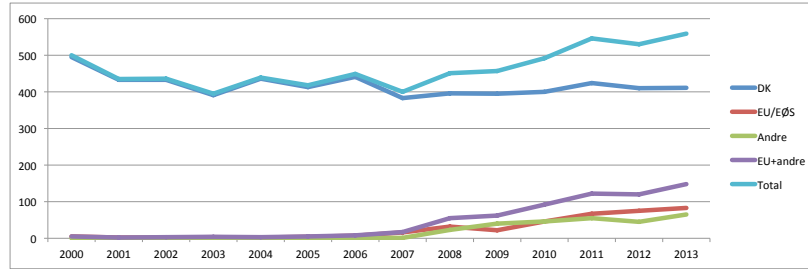
2. styrmand

	DK	EU/EØS	Andre	EU+andre	Total	SKIBE
2000	73	0	108	108	181	504
2001	78	3	88	91	169	474
2002	72	2	79	81	153	445
2003	40	1	80	81	121	435
2004	22	14	69	83	105	417
2005	20	21	86	107	127	405
2006	17	20	152	172	189	422
2007	31	47	178	225	256	413
2008	36	35	216	251	287	444
2009	29	22	175	197	226	465
2010	37	34	159	193	230	505
2011	46	34	178	212	258	540
2012	57	43	180	223	280	539
2013	53	39	197	236	289	519
2014						
2015						
2016						

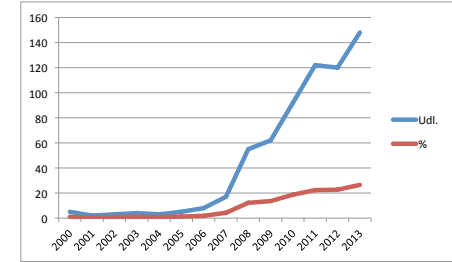


7
Skibsfører

DK	EU/EØS	Andre	EU+andre	Total	SKIBE
2000	495	5	0	5	500
2001	433	2	0	2	435
2002	433	2	1	3	436
2003	391	3	1	4	395
2004	436	2	1	3	439
2005	413	4	1	5	418
2006	441	7	1	8	449
2007	383	16	1	17	400
2008	396	32	23	55	451
2009	395	22	40	62	457
2010	400	46	46	92	492
2011	424	67	55	122	546
2012	410	75	45	120	530
2013	411	83	65	148	559
2014					
2015					
2016					

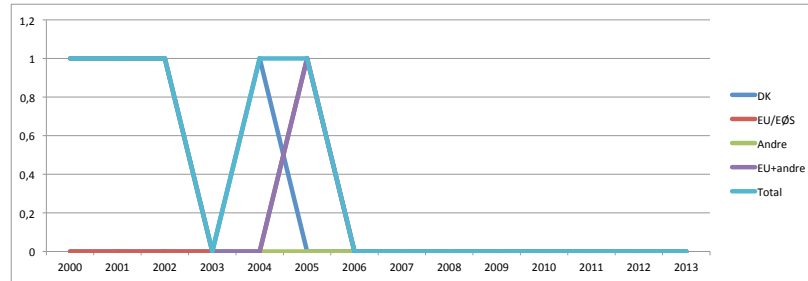


Year	Udl.	%
2000	5	1,0
2001	2	0,5
2002	3	0,7
2003	4	1,0
2004	3	0,7
2005	5	1,2
2006	8	1,8
2007	17	4,3
2008	55	12,2
2009	62	13,6
2010	92	18,7
2011	122	22,3
2012	120	22,6
2013	148	26,5
2014		
2015		
2016		



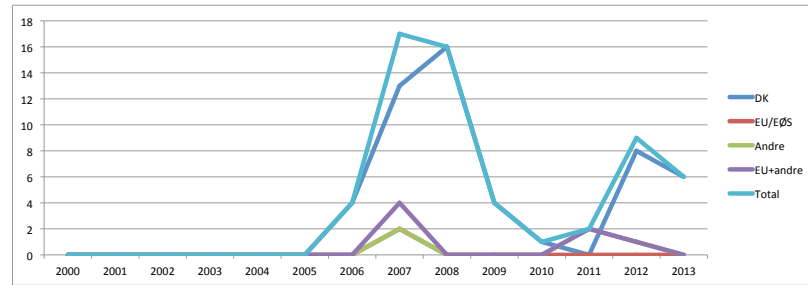
8
Radiotelegrafist

DK	EU/EØS	Andre	EU+andre	Total	SKIBE
2000	0	0	1	1	504
2001	0	0	1	1	474
2002	0	0	1	1	445
2003	0	0	0	0	435
2004	1	0	0	0	417
2005	0	1	0	0	405
2006	0	0	0	0	422
2007	0	0	0	0	413
2008	0	0	0	0	444
2009	0	0	0	0	465
2010	0	0	0	0	505
2011	0	0	0	0	540
2012	0	0	0	0	539
2013	0	0	0	0	519
2014					
2015					
2016					



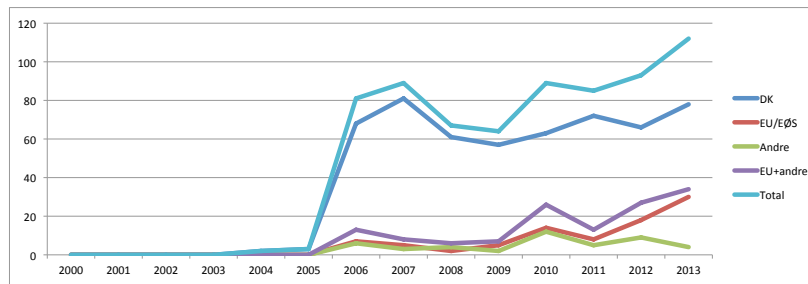
9
Overlæggende styrmand

DK	EU/EØS	Andre	EU+andre	Total	SKIBE
2000	0	0	0	0	504
2001	0	0	0	0	474
2002	0	0	0	0	445
2003	0	0	0	0	435
2004	0	0	0	0	417
2005	0	0	0	0	405
2006	4	0	0	0	422
2007	13	2	2	0	17
2008	16	0	0	0	16
2009	4	0	0	0	4
2010	1	0	0	0	1
2011	0	0	2	2	2
2012	8	0	1	1	9
2013	6	0	0	0	6
2014					
2015					
2016					



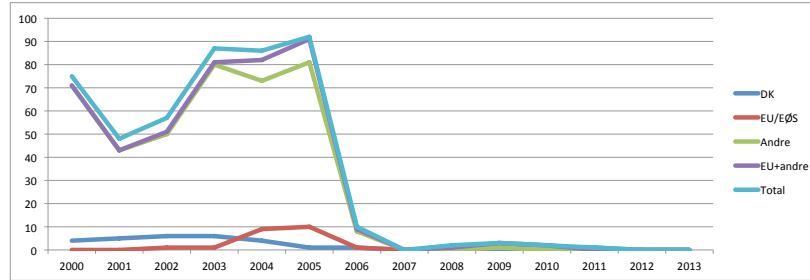
10
Styrmand

DK	EU/EØS	Andre	EU+andre	Total	SKIBE
2000	0	0	0	0	504
2001	0	0	0	0	474
2002	0	0	0	0	445
2003	0	0	0	0	435
2004	2	0	0	0	417
2005	3	0	0	0	405
2006	68	7	6	13	81
2007	81	5	3	8	89
2008	61	2	4	6	67
2009	57	5	2	7	64
2010	63	14	12	26	89
2011	72	8	5	13	85
2012	66	18	9	27	93
2013	78	30	4	34	112
2014					
2015					
2016					



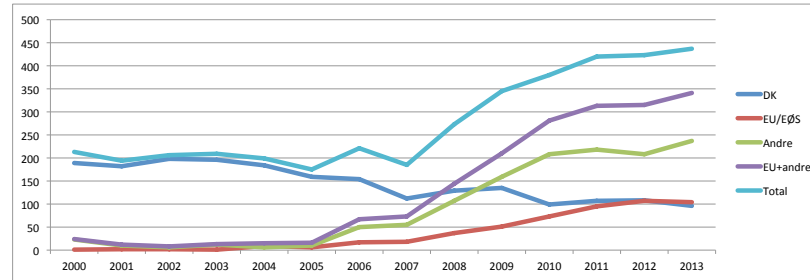
11

Andre navigationsofficerer					
DK	EU/EØS	Andre	EU+andre	Total	SKIBE
2000	4	0	71	75	504
2001	5	0	43	48	474
2002	6	1	50	51	445
2003	6	1	80	81	435
2004	4	9	73	82	417
2005	1	10	81	91	405
2006	1	1	8	9	422
2007	0	0	0	0	413
2008	1	1	0	1	444
2009	0	2	1	3	465
2010	0	2	0	2	505
2011	1	0	0	0	540
2012	0	0	0	0	539
2013	0	0	0	0	519
2014					
2015					
2016					



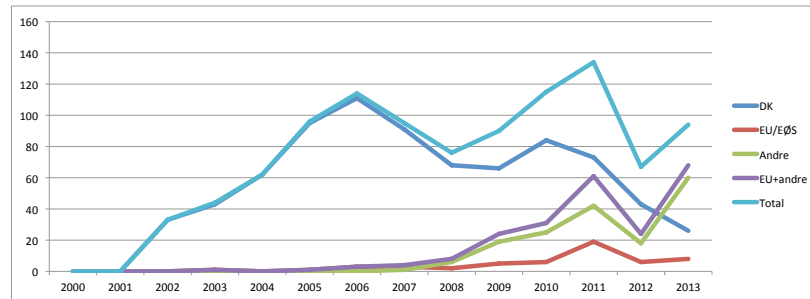
12

1. styrmand						
DK	EU/EØS	Andre	EU+andre	Total	SKIBE	
2000	189	1	23	24	213	504
2001	182	2	10	12	194	474
2002	198	2	6	8	206	445
2003	196	1	12	13	209	435
2004	184	9	6	15	199	417
2005	159	6	10	16	175	405
2006	154	17	50	67	221	422
2007	112	18	55	73	185	413
2008	129	37	107	144	273	444
2009	135	51	159	210	345	465
2010	99	73	208	281	380	505
2011	107	95	218	313	420	540
2012	108	107	208	315	423	539
2013	96	104	237	341	437	519
2014						
2015						
2016						



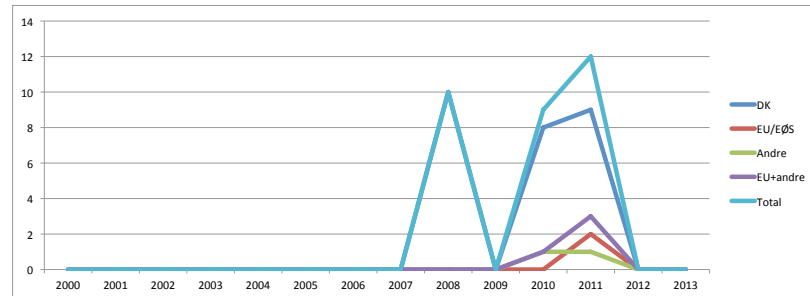
13

Enhedsofficerer						
DK	EU/EØS	Andre	EU+andre	Total	SKIBE	
2000	0	0	0	0	0	504
2001	0	0	0	0	0	474
2002	33	0	0	0	33	445
2003	43	1	0	1	44	435
2004	62	0	0	0	62	417
2005	95	1	0	1	96	405
2006	111	3	0	3	114	422
2007	91	3	1	4	95	413
2008	68	2	6	8	76	444
2009	66	5	19	24	90	465
2010	84	6	25	31	115	505
2011	73	19	42	61	134	540
2012	43	6	18	24	67	539
2013	26	8	60	68	94	519
2014						
2015						
2016						



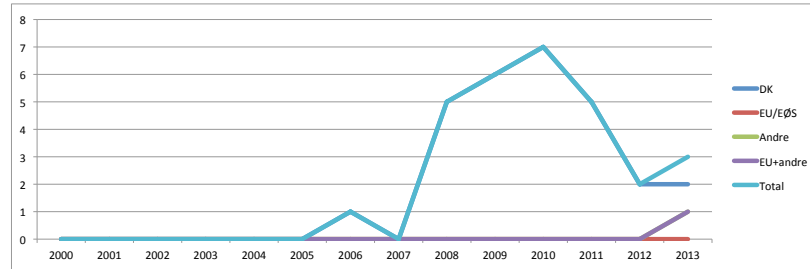
14

Seniorofficerer						
DK	EU/EØS	Andre	EU+andre	Total	SKIBE	
2000	0	0	0	0	0	504
2001	0	0	0	0	0	474
2002	0	0	0	0	0	445
2003	0	0	0	0	0	435
2004	0	0	0	0	0	417
2005	0	0	0	0	0	405
2006	0	0	0	0	0	422
2007	0	0	0	0	0	413
2008	10	0	0	0	10	444
2009	0	0	0	0	0	465
2010	8	0	1	1	9	505
2011	9	2	1	3	12	540
2012	0	0	0	0	0	539
2013	0	0	0	0	0	519
2014						
2015						
2016						



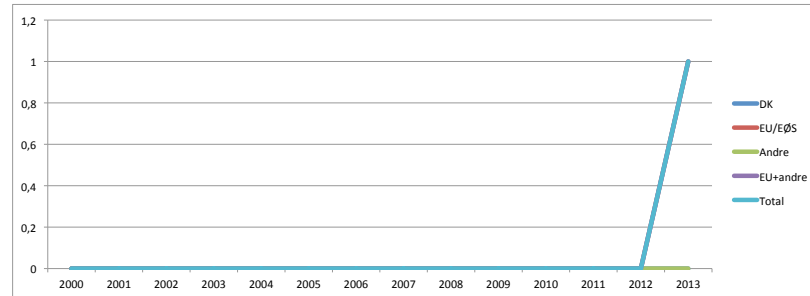
15

Dual S.O. II/2 & III/2						
DK	EU/EØS	Andre	EU+andre	Total	SKIBE	
2000	0	0	0	0	0	504
2001	0	0	0	0	0	474
2002	0	0	0	0	0	445
2003	0	0	0	0	0	435
2004	0	0	0	0	0	417
2005	0	0	0	0	0	405
2006	1	0	0	0	1	422
2007	0	0	0	0	0	413
2008	5	0	0	0	5	444
2009	6	0	0	0	6	465
2010	7	0	0	0	7	505
2011	5	0	0	0	5	540
2012	2	0	0	0	2	539
2013	2	0	1	1	3	519
2014						
2015						
2016						



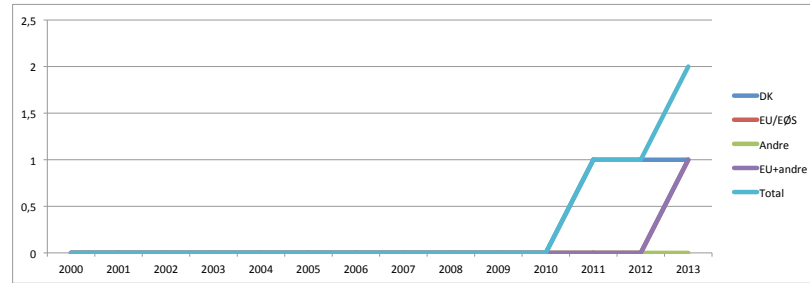
16

Dual S.O. II/1 & III/2						
DK	EU/EØS	Andre	EU+andre	Total	SKIBE	
2000	0	0	0	0	0	504
2001	0	0	0	0	0	474
2002	0	0	0	0	0	445
2003	0	0	0	0	0	435
2004	0	0	0	0	0	417
2005	0	0	0	0	0	405
2006	0	0	0	0	0	422
2007	0	0	0	0	0	413
2008	0	0	0	0	0	444
2009	0	0	0	0	0	465
2010	0	0	0	0	0	505
2011	0	0	0	0	0	540
2012	0	0	0	0	0	539
2013	0	1	0	1	1	519
2014						
2015						
2016						



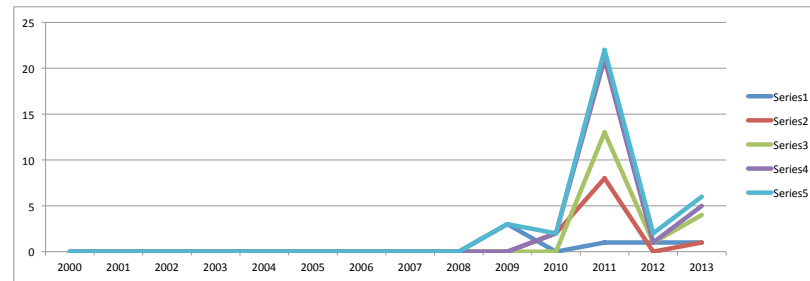
17

Dual Skibsofficer						
DK	EU/EØS	Andre	EU+andre	Total	SKIBE	
2000	0	0	0	0	0	504
2001	0	0	0	0	0	474
2002	0	0	0	0	0	445
2003	0	0	0	0	0	435
2004	0	0	0	0	0	417
2005	0	0	0	0	0	405
2006	0	0	0	0	0	422
2007	0	0	0	0	0	413
2008	0	0	0	0	0	444
2009	0	0	0	0	0	465
2010	0	0	0	0	0	505
2011	1	0	0	0	1	540
2012	1	0	0	0	1	539
2013	1	1	0	1	2	519
2014						
2015						
2016						



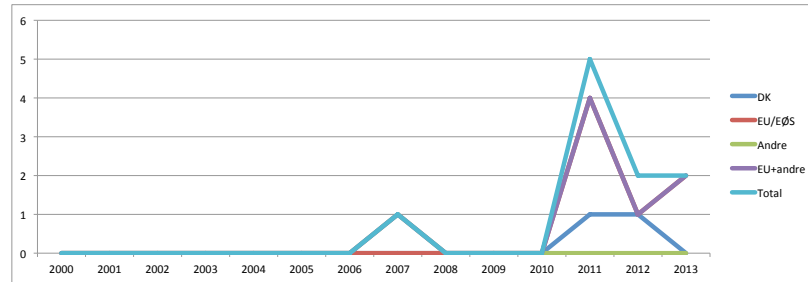
18

Juniorofficer II/1						
DK	EU/EØS	Andre	EU+andre	Total	SKIBE	
2000	0	0	0	0	0	504
2001	0	0	0	0	0	474
2002	0	0	0	0	0	445
2003	0	0	0	0	0	435
2004	0	0	0	0	0	417
2005	0	0	0	0	0	405
2006	0	0	0	0	0	422
2007	0	0	0	0	0	413
2008	0	0	0	0	0	444
2009	3	0	0	0	3	465
2010	0	2	0	2	2	505
2011	1	8	13	21	22	540
2012	1	0	1	1	2	539
2013	1	1	4	5	6	519
2014						
2015						
2016						



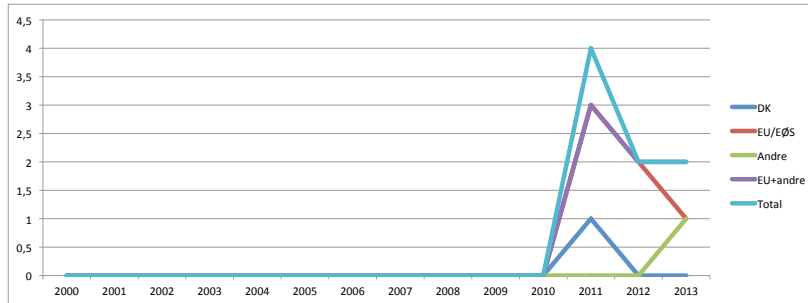
19

Seniorofficer III/2						SKIBE
DK	EU/EØS	Andre	EU+andre	Total	0	
2000	0	0	0	0	0	504
2001	0	0	0	0	0	474
2002	0	0	0	0	0	445
2003	0	0	0	0	0	435
2004	0	0	0	0	0	417
2005	0	0	0	0	0	405
2006	0	0	0	0	0	422
2007	0	0	1	1	1	413
2008	0	0	0	0	0	444
2009	0	0	0	0	0	465
2010	0	0	0	0	0	505
2011	1	4	0	4	5	540
2012	1	1	0	1	2	539
2013	0	2	0	2	2	519
2014						
2015						
2016						



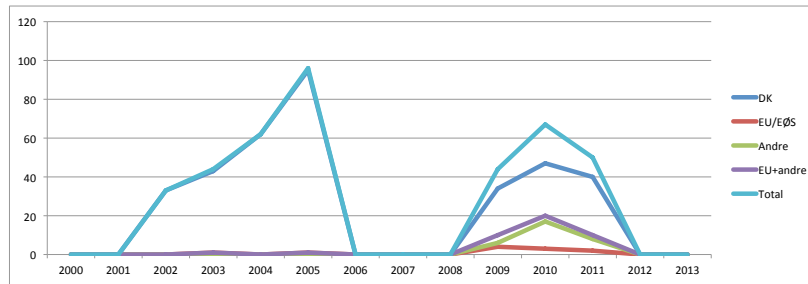
20

Seniorofficer II/2						SKIBE
DK	EU/EØS	Andre	EU+andre	Total	0	
2000	0	0	0	0	0	504
2001	0	0	0	0	0	474
2002	0	0	0	0	0	445
2003	0	0	0	0	0	435
2004	0	0	0	0	0	417
2005	0	0	0	0	0	405
2006	0	0	0	0	0	422
2007	0	0	0	0	0	413
2008	0	0	0	0	0	444
2009	0	0	0	0	0	465
2010	0	0	0	0	0	505
2011	1	3	0	3	4	540
2012	0	2	0	2	2	539
2013	0	1	1	2	2	519
2014						
2015						
2016						



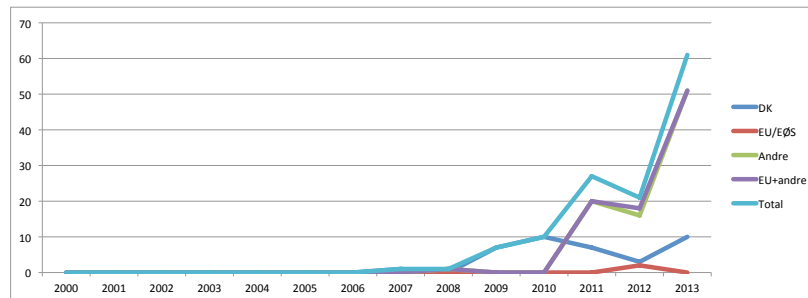
21

Juniorofficer						SKIBE
DK	EU/EØS	Andre	EU+andre	Total	0	
2000	0	0	0	0	0	504
2001	0	0	0	0	0	474
2002	33	0	0	0	33	445
2003	43	1	0	1	44	435
2004	62	0	0	0	62	417
2005	95	1	0	1	96	405
2006	0	0	0	0	0	422
2007	0	0	0	0	0	413
2008	0	0	0	0	0	444
2009	34	4	6	10	44	465
2010	47	3	17	20	67	505
2011	40	2	8	10	50	540
2012	0	0	0	0	0	539
2013	0	0	0	0	0	519
2014						
2015						
2016						



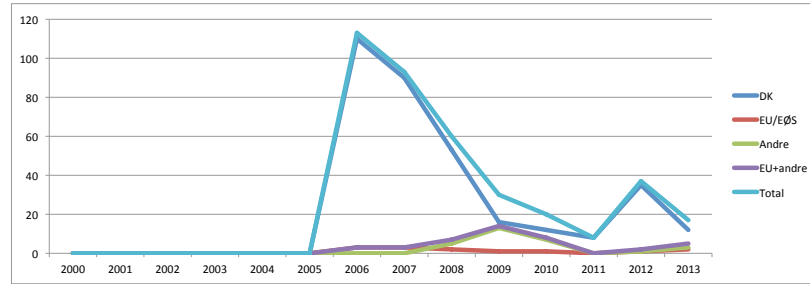
22

Juniorofficer III/1						SKIBE
DK	EU/EØS	Andre	EU+andre	Total	0	
2000	0	0	0	0	0	504
2001	0	0	0	0	0	474
2002	0	0	0	0	0	445
2003	0	0	0	0	0	435
2004	0	0	0	0	0	417
2005	0	0	0	0	0	405
2006	0	0	0	0	0	422
2007	1	0	0	0	1	413
2008	0	0	1	1	1	444
2009	7	0	0	0	7	465
2010	10	0	0	0	10	505
2011	7	0	20	20	27	540
2012	3	2	16	18	21	539
2013	10	0	51	51	61	519
2014						
2015						
2016						



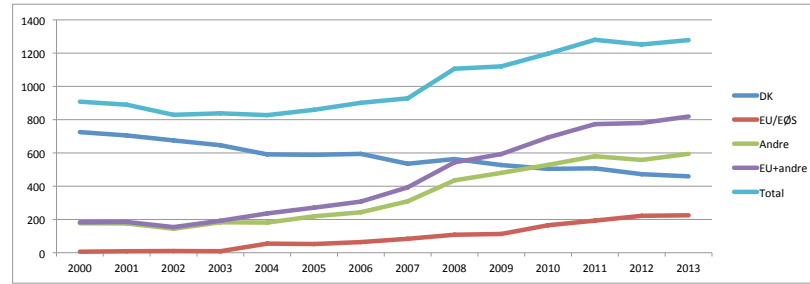
23

Dual J.O. II/1 & III/1						SKIBE
DK	EU/EØS	Andre	EU+andre	Total		
2000	0	0	0	0	0	504
2001	0	0	0	0	0	474
2002	0	0	0	0	0	445
2003	0	0	0	0	0	435
2004	0	0	0	0	0	417
2005	0	0	0	0	0	405
2006	110	3	0	3	113	422
2007	90	3	0	3	93	413
2008	53	2	5	7	60	444
2009	16	1	13	14	30	465
2010	12	1	7	8	20	505
2011	8	0	0	0	8	540
2012	35	1	1	2	37	539
2013	12	2	3	5	17	519
2014						
2015						
2016						



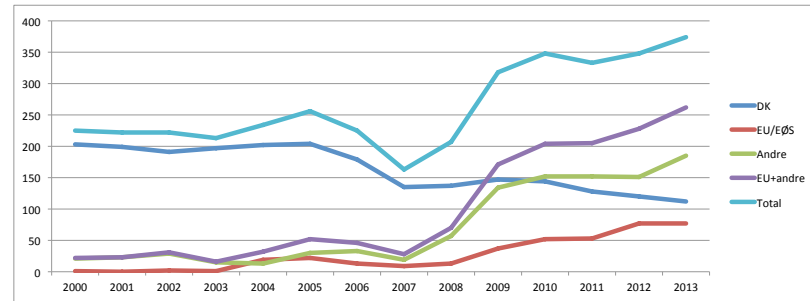
24

Maskinofficerer						SKIBE
DK	EU/EØS	Andre	EU+andre	Total		
2000	725	6	177	183	908	504
2001	705	9	176	185	890	474
2002	675	10	144	154	829	445
2003	646	9	183	192	838	435
2004	591	55	181	236	827	417
2005	588	52	219	271	859	405
2006	594	64	243	307	901	422
2007	535	84	309	393	928	413
2008	563	108	435	543	1106	444
2009	527	113	480	593	1120	465
2010	504	165	528	693	1197	505
2011	507	193	580	773	1280	540
2012	472	222	558	780	1252	539
2013	459	225	594	819	1278	519
2014						
2015						
2016						



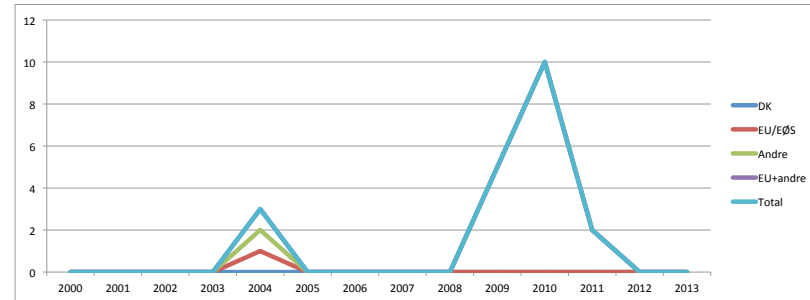
25

1. maskinmester						SKIBE
DK	EU/EØS	Andre	EU+andre	Total		
2000	203	1	21	22	225	504
2001	199	0	23	23	222	474
2002	191	2	29	31	222	445
2003	197	1	15	16	213	435
2004	202	19	13	32	234	417
2005	204	22	30	52	256	405
2006	179	13	33	46	225	422
2007	135	9	19	28	163	413
2008	137	13	57	70	207	444
2009	147	37	134	171	318	465
2010	144	52	152	204	348	505
2011	128	53	152	205	333	540
2012	120	77	151	228	348	539
2013	112	77	185	262	374	519
2014						
2015						
2016						



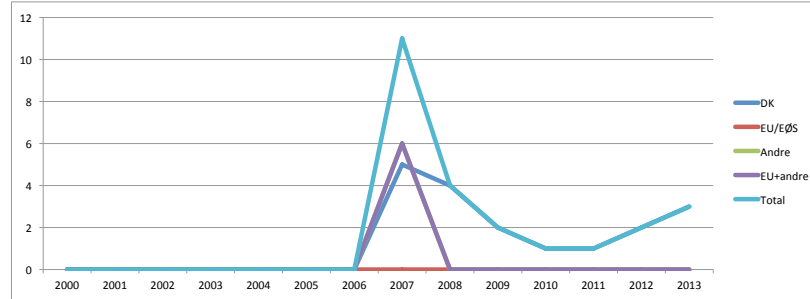
26

3. maskinmester						SKIBE
DK	EU/EØS	Andre	EU+andre	Total		
2000	0	0	0	0	0	504
2001	0	0	0	0	0	474
2002	0	0	0	0	0	445
2003	0	0	0	0	0	435
2004	0	1	2	3	3	417
2005	0	0	0	0	0	405
2006	0	0	0	0	0	422
2007	0	0	0	0	0	413
2008	0	0	0	0	0	444
2009	0	0	5	5	5	465
2010	0	0	10	10	10	505
2011	0	0	2	2	2	540
2012	0	0	0	0	0	539
2013	0	0	0	0	0	519
2014						
2015						
2016						



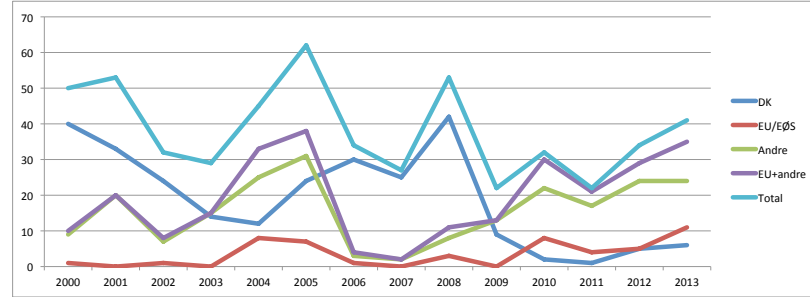
27

Overtalig maskinmester						
DK	EU/EØS	Andre	EU+andre	Total	SKIBE	
2000	0	0	0	0	0	504
2001	0	0	0	0	0	474
2002	0	0	0	0	0	445
2003	0	0	0	0	0	435
2004	0	0	0	0	0	417
2005	0	0	0	0	0	405
2006	0	0	0	0	0	422
2007	5	0	6	6	11	413
2008	4	0	0	0	4	444
2009	2	0	0	0	2	465
2010	1	0	0	0	1	505
2011	1	0	0	0	1	540
2012	2	0	0	0	2	539
2013	3	0	0	0	3	519
2014						
2015						
2016						



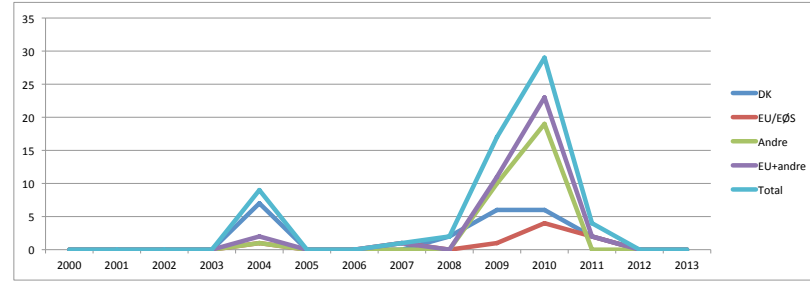
28

Andre maskinofficerer						
DK	EU/EØS	Andre	EU+andre	Total	SKIBE	
2000	40	1	9	50	504	
2001	33	0	20	20	53	474
2002	24	1	7	8	32	445
2003	14	0	15	15	29	435
2004	12	8	25	33	45	417
2005	24	7	31	38	62	405
2006	30	1	3	4	34	422
2007	25	0	2	2	27	413
2008	42	3	8	11	53	444
2009	9	0	13	13	22	465
2010	2	8	22	30	32	505
2011	1	4	17	21	22	540
2012	5	5	24	29	34	539
2013	6	11	24	35	41	519
2014						
2015						
2016						



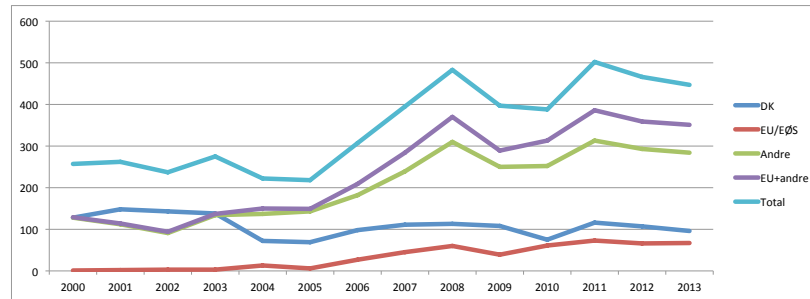
29

2. maskinmester						
DK	EU/EØS	Andre	EU+andre	Total	SKIBE	
2000	0	0	0	0	0	504
2001	0	0	0	0	0	474
2002	0	0	0	0	0	445
2003	0	0	0	0	0	435
2004	7	1	1	2	9	417
2005	0	0	0	0	0	405
2006	0	0	0	0	0	422
2007	0	1	0	1	1	413
2008	2	0	0	0	2	444
2009	6	1	10	11	17	465
2010	6	4	19	23	29	505
2011	2	2	0	2	4	540
2012	0	0	0	0	0	539
2013	0	0	0	0	0	519
2014						
2015						
2016						



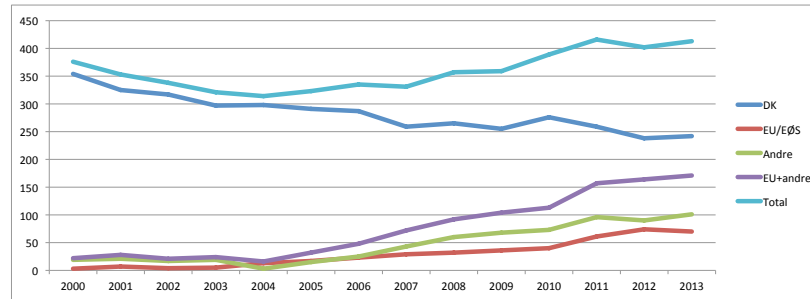
30

Maskinmester						
DK	EU/EØS	Andre	EU+andre	Total	SKIBE	
2000	128	1	128	129	257	504
2001	148	2	112	114	262	474
2002	143	3	91	94	237	445
2003	138	3	134	137	275	435
2004	72	13	137	150	222	417
2005	69	6	143	149	218	405
2006	98	27	182	209	307	422
2007	111	45	239	284	395	413
2008	113	60	310	370	483	444
2009	108	39	250	289	397	465
2010	75	61	252	313	388	505
2011	116	73	313	386	502	540
2012	107	66	293	359	466	539
2013	96	67	284	351	447	519
2014						
2015						
2016						



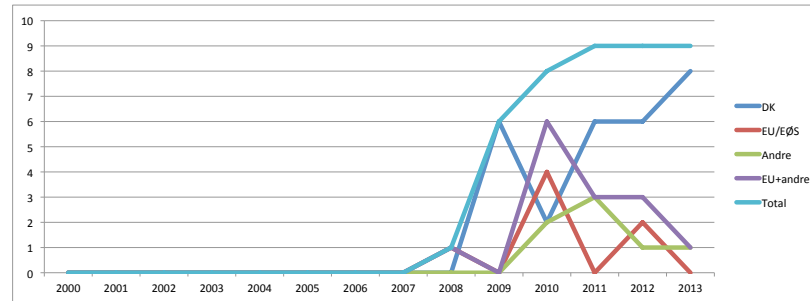
31

Maskinchef	DK	EU/EØS	Andre	EU+andre	Total	SKIBE
2000	354	3	19	22	376	504
2001	325	7	21	28	353	474
2002	317	4	17	21	338	445
2003	297	5	19	24	321	435
2004	298	13	3	16	314	417
2005	291	17	15	32	323	405
2006	287	23	25	48	335	422
2007	259	29	43	72	331	413
2008	265	32	60	92	357	444
2009	255	36	68	104	359	465
2010	276	40	73	113	389	505
2011	259	61	96	157	416	540
2012	238	74	90	164	402	539
2013	242	70	101	171	413	519
2014						
2015						
2016						



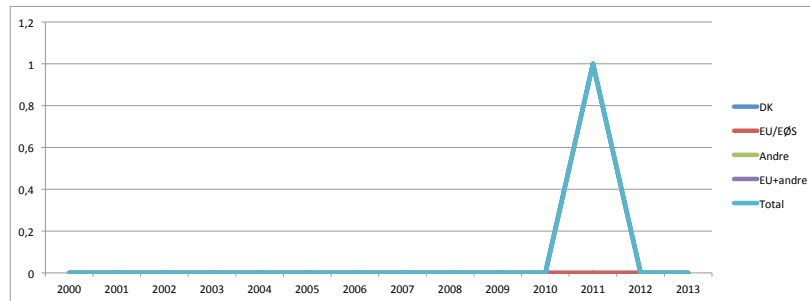
32

PLATFORMSOFFICER	DK	EU/EØS	Andre	EU+andre	Total	SKIBE
2000	0	0	0	0	0	504
2001	0	0	0	0	0	474
2002	0	0	0	0	0	445
2003	0	0	0	0	0	435
2004	0	0	0	0	0	417
2005	0	0	0	0	0	405
2006	0	0	0	0	0	422
2007	0	0	0	0	0	413
2008	0	1	0	1	1	444
2009	6	0	0	0	6	465
2010	2	4	2	6	8	505
2011	6	0	3	3	9	540
2012	6	2	1	3	9	539
2013	8	0	1	1	9	519
2014						
2015						
2016						



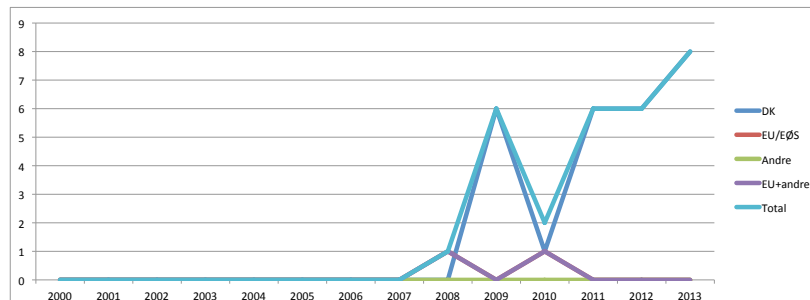
33

Assisterende platformschef	DK	EU/EØS	Andre	EU+andre	Total	SKIBE
2000	0	0	0	0	0	504
2001	0	0	0	0	0	474
2002	0	0	0	0	0	445
2003	0	0	0	0	0	435
2004	0	0	0	0	0	417
2005	0	0	0	0	0	405
2006	0	0	0	0	0	422
2007	0	0	0	0	0	413
2008	0	0	0	0	0	444
2009	0	0	0	0	0	465
2010	0	0	0	0	0	505
2011	0	0	1	1	1	540
2012	0	0	0	0	0	539
2013	0	0	0	0	0	519
2014						
2015						
2016						



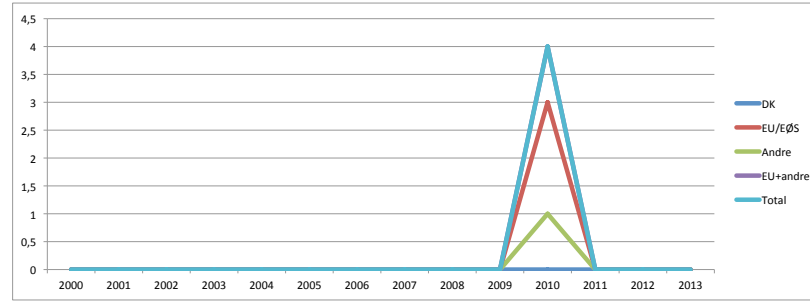
34

Vedligeholdelseschef	DK	EU/EØS	Andre	EU+andre	Total	SKIBE
2000	0	0	0	0	0	504
2001	0	0	0	0	0	474
2002	0	0	0	0	0	445
2003	0	0	0	0	0	435
2004	0	0	0	0	0	417
2005	0	0	0	0	0	405
2006	0	0	0	0	0	422
2007	0	0	0	0	0	413
2008	0	1	0	1	1	444
2009	6	0	0	0	6	465
2010	1	1	0	1	2	505
2011	6	0	0	0	6	540
2012	6	0	0	0	6	539
2013	8	0	0	0	8	519
2014						
2015						
2016						



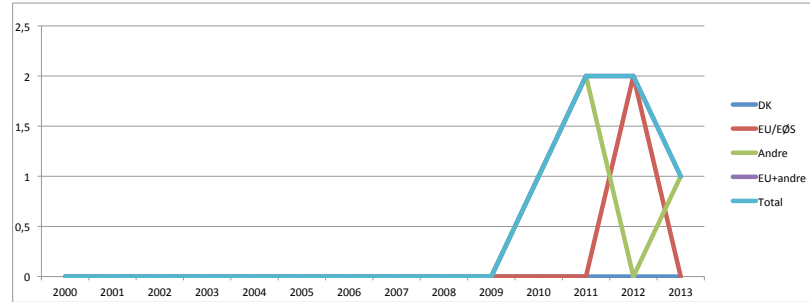
35

Senior Officer Offshore						
DK	EU/EØS	Andre	EU+andre	Total	SKIBE	
2000	0	0	0	0	0	504
2001	0	0	0	0	0	474
2002	0	0	0	0	0	445
2003	0	0	0	0	0	435
2004	0	0	0	0	0	417
2005	0	0	0	0	0	405
2006	0	0	0	0	0	422
2007	0	0	0	0	0	413
2008	0	0	0	0	0	444
2009	0	0	0	0	0	465
2010	0	3	1	4	4	505
2011	0	0	0	0	0	540
2012	0	0	0	0	0	539
2013	0	0	0	0	0	519
2014						
2015						
2016						



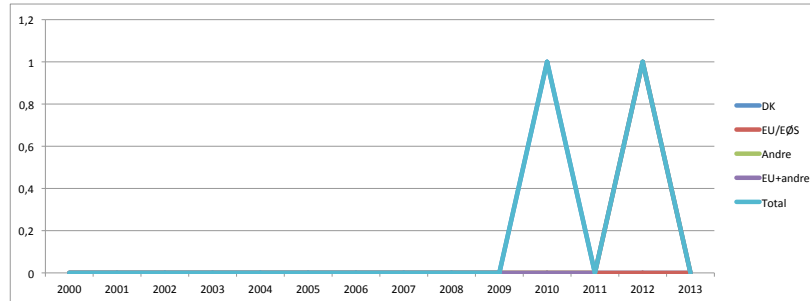
36

Plattformchef						
DK	EU/EØS	Andre	EU+andre	Total	SKIBE	
2000	0	0	0	0	0	504
2001	0	0	0	0	0	474
2002	0	0	0	0	0	445
2003	0	0	0	0	0	435
2004	0	0	0	0	0	417
2005	0	0	0	0	0	405
2006	0	0	0	0	0	422
2007	0	0	0	0	0	413
2008	0	0	0	0	0	444
2009	0	0	0	0	0	465
2010	0	0	1	1	1	505
2011	0	0	2	2	2	540
2012	0	2	0	2	2	539
2013	0	0	1	1	1	519
2014						
2015						
2016						



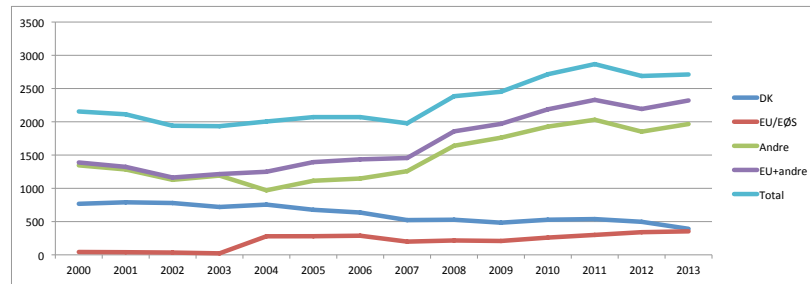
37

Towmaster						
DK	EU/EØS	Andre	EU+andre	Total	SKIBE	
2000	0	0	0	0	0	504
2001	0	0	0	0	0	474
2002	0	0	0	0	0	445
2003	0	0	0	0	0	435
2004	0	0	0	0	0	417
2005	0	0	0	0	0	405
2006	0	0	0	0	0	422
2007	0	0	0	0	0	413
2008	0	0	0	0	0	444
2009	0	0	0	0	0	465
2010	1	0	0	0	1	505
2011	0	0	0	0	0	540
2012	0	0	1	1	1	539
2013	0	0	0	0	0	519
2014						
2015						
2016						



38

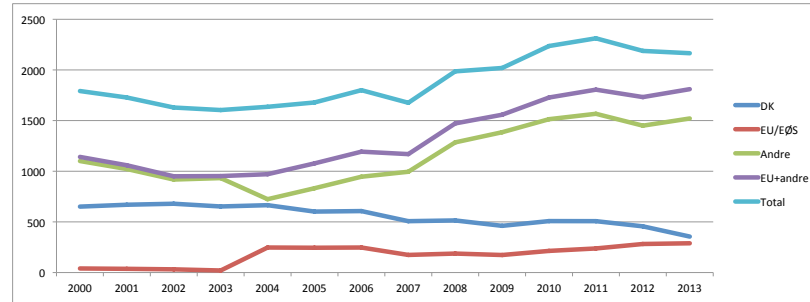
DÆKS- OG MASKINBESÆTNING						
DK	EU/EØS	Andre	EU+andre	Total	SKIBE	
2000	767	43	1345	1388	2155	504
2001	790	40	1283	1323	2113	474
2002	779	34	1128	1162	1941	445
2003	720	22	1192	1214	1934	435
2004	755	279	970	1249	2004	417
2005	677	280	1114	1394	2071	405
2006	636	288	1147	1435	2071	422
2007	522	199	1257	1456	1978	413
2008	528	216	1640	1856	2384	444
2009	483	208	1761	1969	2452	465
2010	528	259	1928	2187	2715	505
2011	538	299	2030	2329	2867	540
2012	496	341	1852	2193	2689	539
2013	391	354	1967	2321	2712	519
2014						
2015						
2016						



39

Enhedsbesætning

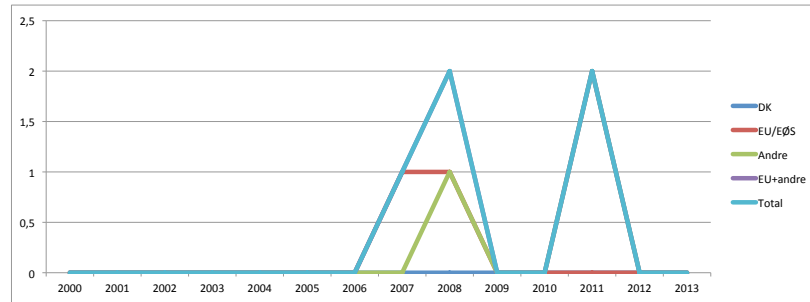
DK	EU/EØS	Andre	EU+andre	Total	SKIBE	
2000	651	40	1101	1141	1792	504
2001	669	37	1022	1059	1728	474
2002	679	32	918	950	1629	445
2003	652	20	932	952	1604	435
2004	665	247	724	971	1636	417
2005	602	245	832	1077	1679	405
2006	607	247	946	1193	1800	422
2007	507	174	995	1169	1676	413
2008	514	187	1285	1472	1986	444
2009	461	173	1385	1558	2019	465
2010	508	214	1514	1728	2236	505
2011	507	238	1567	1805	2312	540
2012	456	282	1450	1732	2188	539
2013	355	289	1521	1810	2165	519
2014						
2015						
2016						



40

Radiooperatør

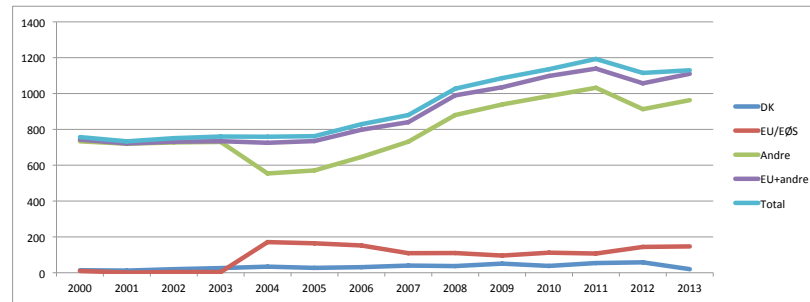
DK	EU/EØS	Andre	EU+andre	Total	SKIBE	
2000	0	0	0	0	0	504
2001	0	0	0	0	0	474
2002	0	0	0	0	0	445
2003	0	0	0	0	0	435
2004	0	0	0	0	0	417
2005	0	0	0	0	0	405
2006	0	0	0	0	0	422
2007	0	1	0	1	1	413
2008	0	1	1	2	2	444
2009	0	0	0	0	0	465
2010	0	0	0	0	0	505
2011	0	0	2	2	2	540
2012	0	0	0	0	0	539
2013	0	0	0	0	0	519
2014						
2015						
2016						



41

Belæren matros

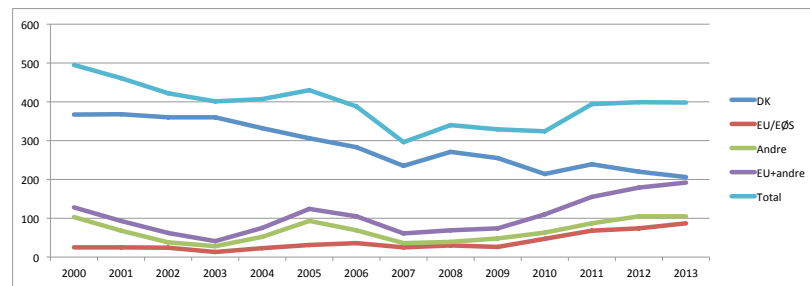
DK	EU/EØS	Andre	EU+andre	Total	SKIBE	
2000	14	10	733	743	757	504
2001	12	1	720	721	733	474
2002	20	4	727	731	751	445
2003	26	4	730	734	760	435
2004	34	171	554	725	759	417
2005	27	164	571	735	782	405
2006	31	152	646	798	829	422
2007	40	109	731	840	880	413
2008	37	110	880	990	1027	444
2009	51	96	939	1035	1086	465
2010	38	112	986	1098	1136	505
2011	54	107	1032	1139	1193	540
2012	58	144	913	1057	1115	539
2013	20	147	963	1110	1130	519
2014						
2015						
2016						



42

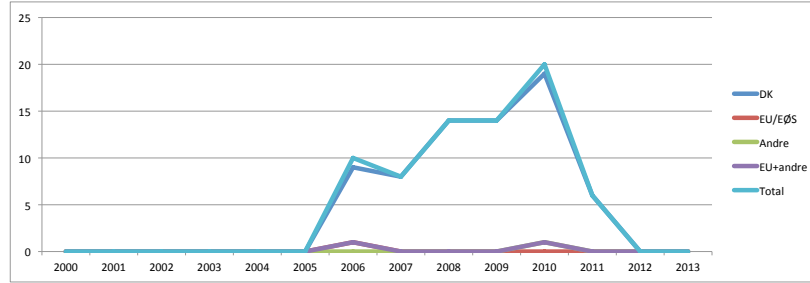
Bef. skibsassistent

DK	EU/EØS	Andre	EU+andre	Total	SKIBE	
2000	367	25	103	128	495	504
2001	368	25	68	93	461	474
2002	360	24	38	62	422	445
2003	360	13	28	41	401	435
2004	332	23	52	75	407	417
2005	306	31	93	124	430	405
2006	283	36	69	105	388	422
2007	235	25	36	61	296	413
2008	271	30	39	69	340	444
2009	255	26	48	74	329	465
2010	214	47	63	110	324	505
2011	239	68	87	155	394	540
2012	220	74	105	179	399	539
2013	206	87	105	192	398	519
2014						
2015						
2016						



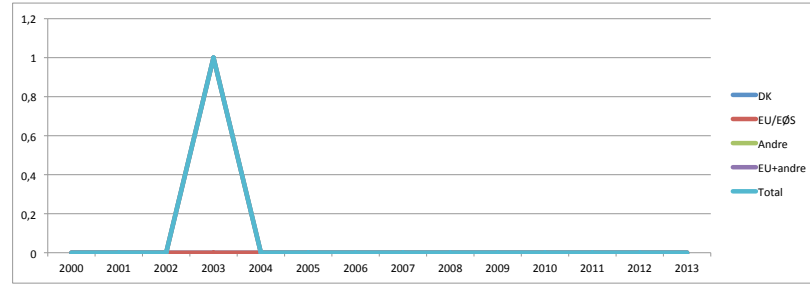
43

Bedstemænd	DK	EU/EØS	Andre	EU+andre	Total	SKIBE
2000	0	0	0	0	0	504
2001	0	0	0	0	0	474
2002	0	0	0	0	0	445
2003	0	0	0	0	0	435
2004	0	0	0	0	0	417
2005	0	0	0	0	0	405
2006	9	1	0	1	10	422
2007	8	0	0	0	8	413
2008	14	0	0	0	14	444
2009	14	0	0	0	14	465
2010	19	0	1	1	20	505
2011	6	0	0	0	6	540
2012	0	0	0	0	0	539
2013	0	0	0	0	0	519
2014						
2015						
2016						



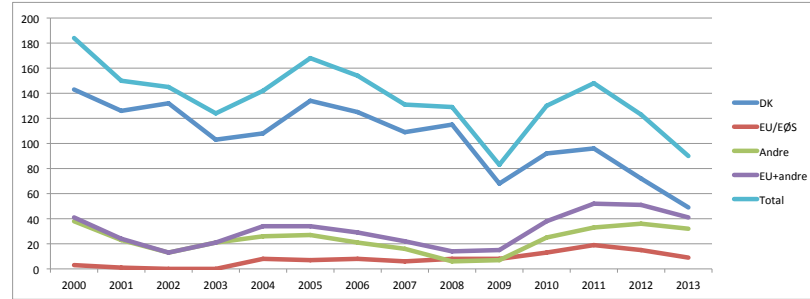
44

Skibsassistentelev	DK	EU/EØS	Andre	EU+andre	Total	SKIBE
2000	0	0	0	0	0	504
2001	0	0	0	0	0	474
2002	0	0	0	0	0	445
2003	0	0	1	1	1	435
2004	0	0	0	0	0	417
2005	0	0	0	0	0	405
2006	0	0	0	0	0	422
2007	0	0	0	0	0	413
2008	0	0	0	0	0	444
2009	0	0	0	0	0	465
2010	0	0	0	0	0	505
2011	0	0	0	0	0	540
2012	0	0	0	0	0	539
2013	0	0	0	0	0	519
2014						
2015						
2016						



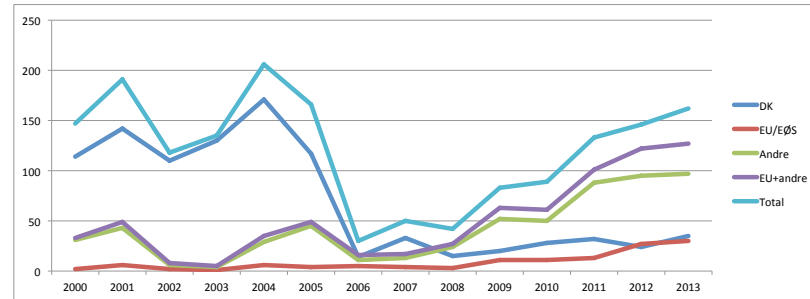
45

Uberf. Skibsassistent	DK	EU/EØS	Andre	EU+andre	Total	SKIBE
2000	143	3	38	41	184	504
2001	126	1	23	24	150	474
2002	132	0	13	13	145	445
2003	103	0	21	21	124	435
2004	108	8	26	34	142	417
2005	134	7	27	34	168	405
2006	125	8	21	29	154	422
2007	109	6	16	22	131	413
2008	115	8	6	14	129	444
2009	68	8	7	15	83	465
2010	92	13	25	38	130	505
2011	96	19	33	52	148	540
2012	72	15	36	51	123	539
2013	49	9	32	41	90	519
2014						
2015						
2016						



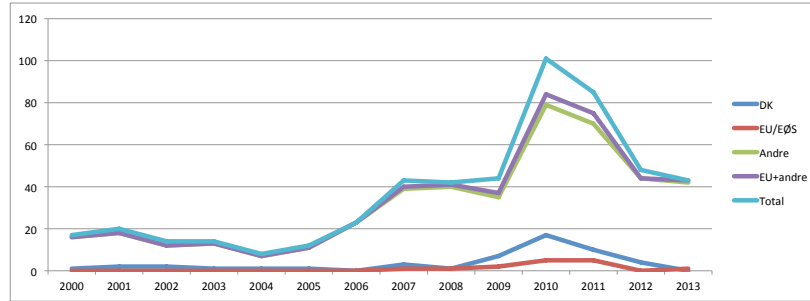
46

Styrmandsaspirant	DK	EU/EØS	Andre	EU+andre	Total	SKIBE
2000	114	2	31	33	147	504
2001	142	6	43	49	191	474
2002	110	2	6	8	118	445
2003	130	1	4	5	135	435
2004	171	6	29	35	206	417
2005	117	4	45	49	166	405
2006	14	5	11	16	30	422
2007	33	4	13	17	50	413
2008	15	3	24	27	42	444
2009	20	11	52	63	83	465
2010	28	11	50	61	89	505
2011	32	13	88	101	133	540
2012	24	27	95	122	146	539
2013	35	30	97	127	162	519
2014						
2015						
2016						



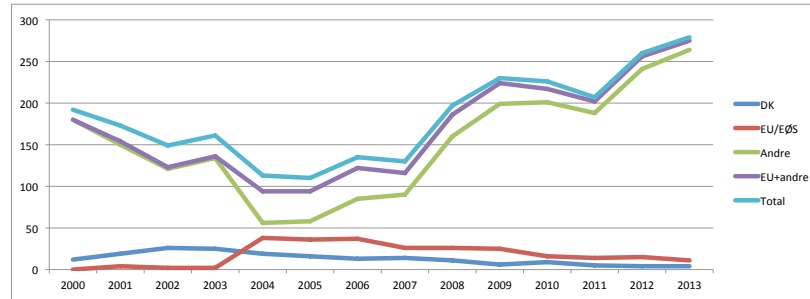
47

Anden dæksbesætning					
DK	EU/EØS	Andre	EU+andre	Total	SKIBE
2000	1	0	16	17	504
2001	2	0	18	20	474
2002	2	0	12	14	445
2003	1	0	13	14	435
2004	1	0	7	8	417
2005	1	0	11	12	405
2006	0	0	23	23	422
2007	3	1	39	43	413
2008	1	1	40	42	444
2009	7	2	35	44	465
2010	17	5	79	101	505
2011	10	5	70	85	540
2012	4	0	44	48	539
2013	0	1	42	43	519
2014					
2015					
2016					



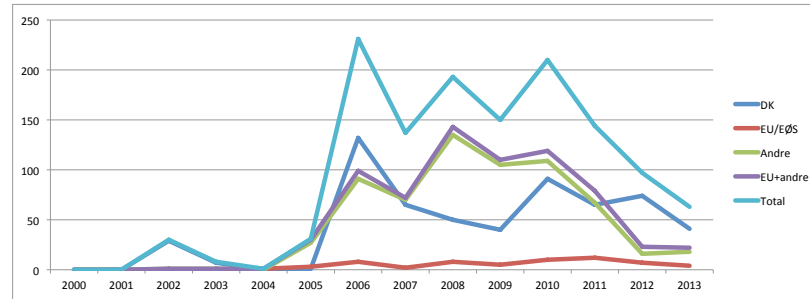
48

Ubefæren matros					
DK	EU/EØS	Andre	EU+andre	Total	SKIBE
2000	12	0	180	192	504
2001	19	4	150	173	474
2002	26	2	121	149	445
2003	25	2	134	161	435
2004	19	38	56	94	417
2005	16	36	58	94	405
2006	13	37	85	122	422
2007	14	26	90	116	413
2008	11	26	160	186	444
2009	6	25	199	224	465
2010	9	16	201	217	505
2011	5	14	188	202	540
2012	4	15	241	256	539
2013	4	11	264	275	519
2014					
2015					
2016					



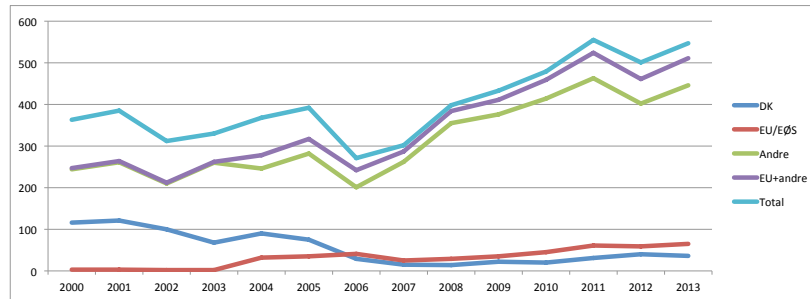
49

Dual cadet					
DK	EU/EØS	Andre	EU+andre	Total	SKIBE
2000	0	0	0	0	504
2001	0	0	0	0	474
2002	29	0	1	1	30
2003	7	0	1	1	8
2004	0	1	0	-1	1
2005	1	3	27	30	31
2006	132	8	91	99	231
2007	65	2	70	72	137
2008	50	8	135	143	193
2009	40	5	105	110	150
2010	91	10	109	119	210
2011	65	12	67	79	144
2012	74	7	16	23	97
2013	41	4	18	22	63
2014					
2015					
2016					



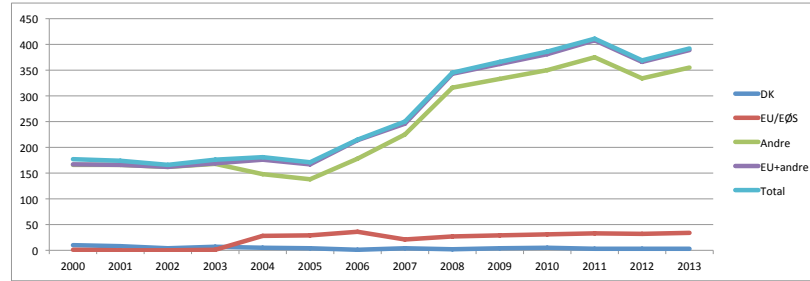
50

Maskinbesætning					
DK	EU/EØS	Andre	EU+andre	Total	SKIBE
2000	116	3	244	247	363
2001	121	3	261	264	385
2002	100	2	210	212	312
2003	68	2	260	262	330
2004	90	32	246	278	368
2005	75	35	282	317	392
2006	29	41	201	242	271
2007	15	25	262	287	302
2008	14	29	355	384	398
2009	22	35	376	411	433
2010	20	45	414	459	479
2011	31	61	463	524	555
2012	40	59	402	461	501
2013	36	65	446	511	547
2014					
2015					
2016					



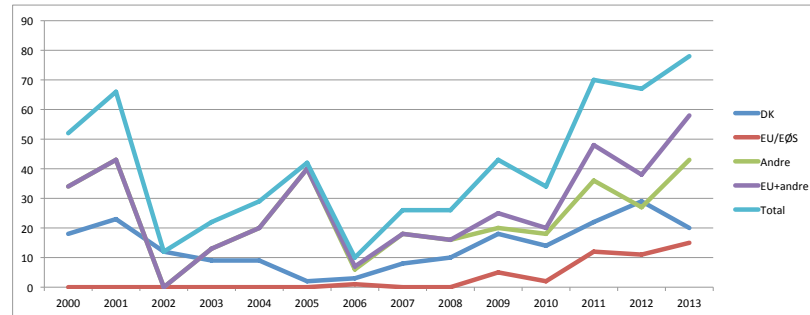
51

Befaren motormand						
DK	EU/EØS	Andre	EU+andre	Total	SKIBE	
2000	10	1	166	167	177	504
2001	8	0	166	166	174	474
2002	4	0	162	162	166	445
2003	7	1	168	169	176	435
2004	5	28	148	176	181	417
2005	4	29	138	167	171	405
2006	1	36	178	214	215	422
2007	4	21	225	246	250	413
2008	2	27	316	343	345	444
2009	4	29	333	362	366	465
2010	5	31	350	381	386	505
2011	3	33	375	408	411	540
2012	3	32	334	366	369	539
2013	3	34	355	389	392	519
2014						
2015						
2016						



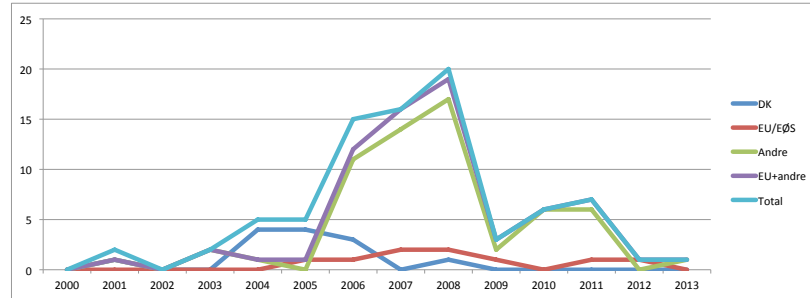
52

Maskinmesteraspirant						
DK	EU/EØS	Andre	EU+andre	Total	SKIBE	
2000	18	0	34	34	52	504
2001	23	0	43	43	66	474
2002	12	0	0	0	12	445
2003	9	0	13	13	22	435
2004	9	0	20	20	29	417
2005	2	0	40	40	42	405
2006	3	1	6	7	10	422
2007	8	0	18	18	26	413
2008	10	0	16	16	26	444
2009	18	5	20	25	43	465
2010	14	2	18	20	34	505
2011	22	12	36	48	70	540
2012	29	11	27	38	67	539
2013	20	15	43	58	78	519
2014						
2015						
2016						



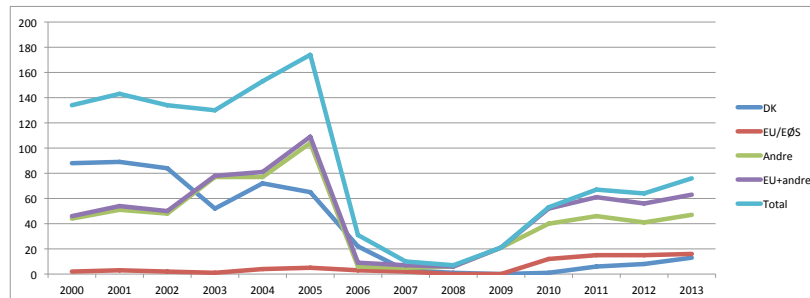
53

Ubefaren motormand						
DK	EU/EØS	Andre	EU+andre	Total	SKIBE	
2000	0	0	0	0	0	504
2001	1	0	1	1	2	474
2002	0	0	0	0	0	445
2003	0	0	2	2	2	435
2004	4	0	1	1	5	417
2005	4	1	0	1	5	405
2006	3	1	11	12	15	422
2007	0	2	14	16	16	413
2008	1	2	17	19	20	444
2009	0	1	2	3	3	465
2010	0	0	6	6	6	505
2011	0	1	6	7	7	540
2012	0	1	0	1	1	539
2013	0	0	1	1	1	519
2014						
2015						
2016						



54

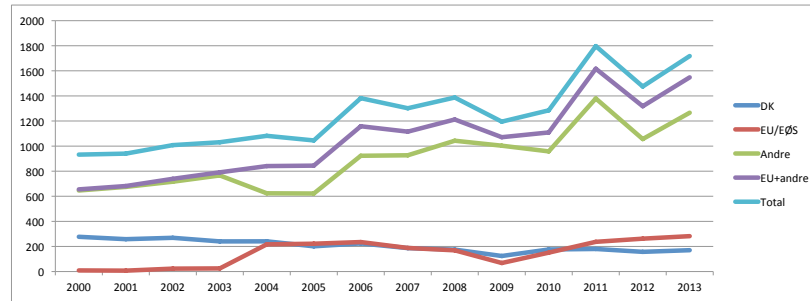
Anden maskinbesætning						
DK	EU/EØS	Andre	EU+andre	Total	SKIBE	
2000	88	2	44	46	134	504
2001	89	3	51	54	143	474
2002	84	2	48	50	134	445
2003	52	1	77	78	130	435
2004	72	4	77	81	153	417
2005	65	5	104	109	174	405
2006	22	3	6	9	31	422
2007	3	2	5	7	10	413
2008	1	0	6	6	7	444
2009	0	0	21	21	21	465
2010	1	12	40	52	53	505
2011	6	15	46	61	67	540
2012	8	15	41	56	64	539
2013	13	16	47	63	76	519
2014						
2015						
2016						



55

ANDRE TJENSTGØRENDE

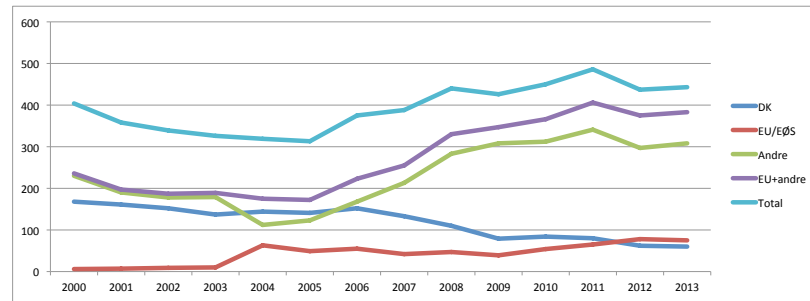
	DK	EU/EØS	Andre	EU+andre	Total	SKIBE
2000	277	9	646	655	932	504
2001	258	7	675	682	940	474
2002	269	23	716	739	1008	445
2003	240	25	766	791	1031	435
2004	241	217	624	841	1082	417
2005	201	222	622	844	1045	405
2006	224	235	923	1158	1382	422
2007	187	188	927	1115	1302	413
2008	175	169	1043	1212	1387	444
2009	124	68	1003	1071	1195	465
2010	176	151	958	1109	1285	505
2011	180	237	1380	1617	1797	540
2012	157	262	1056	1318	1475	539
2013	170	282	1266	1548	1718	519
2014						
2015						
2016						



56

Kabyspersonale

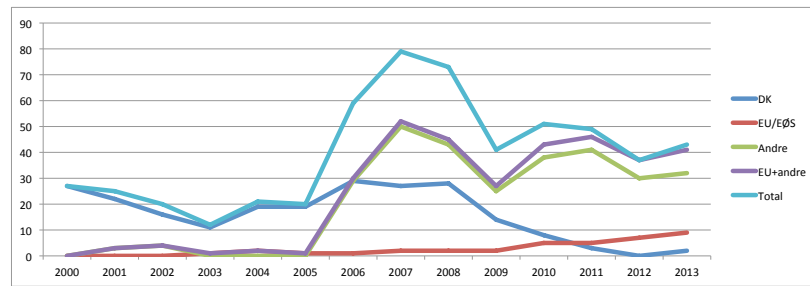
	DK	EU/EØS	Andre	EU+andre	Total	SKIBE
2000	168	6	230	236	404	504
2001	161	7	190	197	358	474
2002	152	9	178	187	339	445
2003	137	10	179	189	326	435
2004	144	63	112	175	319	417
2005	141	49	123	172	313	405
2006	152	55	168	223	375	422
2007	133	42	213	255	388	413
2008	110	47	283	330	440	444
2009	79	39	308	347	426	465
2010	84	54	312	366	450	505
2011	80	65	341	406	486	540
2012	62	78	297	375	437	539
2013	60	75	308	383	443	519
2014						
2015						
2016						



57

Kabyspersonale

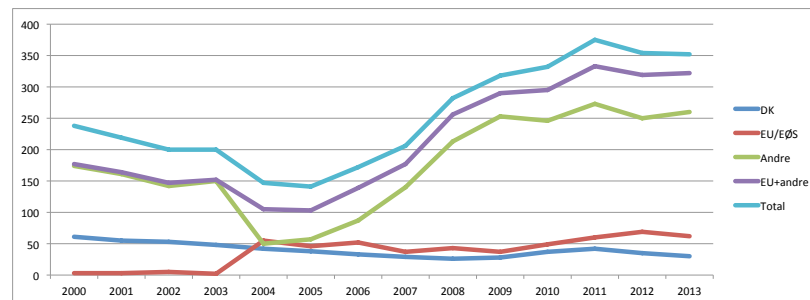
	DK	EU/EØS	Andre	EU+andre	Total	SKIBE
2000	27	0	0	0	27	504
2001	22	0	3	3	25	474
2002	16	0	4	4	20	445
2003	11	1	0	1	12	435
2004	19	2	0	2	21	417
2005	19	1	0	1	20	405
2006	29	1	29	30	59	422
2007	27	2	50	52	79	413
2008	28	2	43	45	73	444
2009	14	2	25	27	41	465
2010	8	5	38	43	51	505
2011	3	5	41	46	49	540
2012	0	7	30	37	37	539
2013	2	9	32	41	43	519
2014						
2015						
2016						



58

Kok

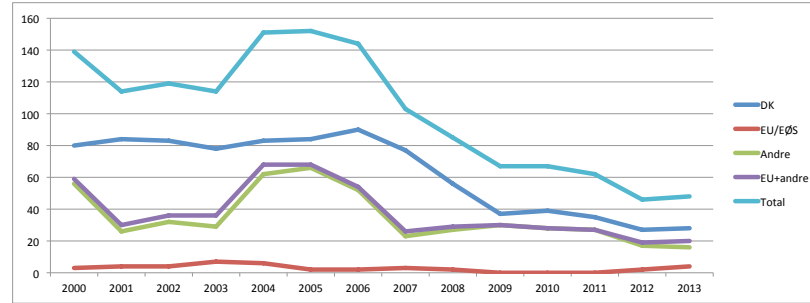
	DK	EU/EØS	Andre	EU+andre	Total	SKIBE
2000	61	3	174	177	238	504
2001	55	3	161	164	219	474
2002	53	5	142	147	200	445
2003	48	2	150	152	200	435
2004	42	55	50	105	147	417
2005	38	46	57	103	141	405
2006	33	52	87	139	172	422
2007	29	37	140	177	206	413
2008	26	43	213	256	282	444
2009	28	37	253	290	318	465
2010	37	49	246	295	332	505
2011	42	60	273	333	375	540
2012	35	69	250	319	354	539
2013	30	62	260	322	352	519
2014						
2015						
2016						



59

Hovmester/purser

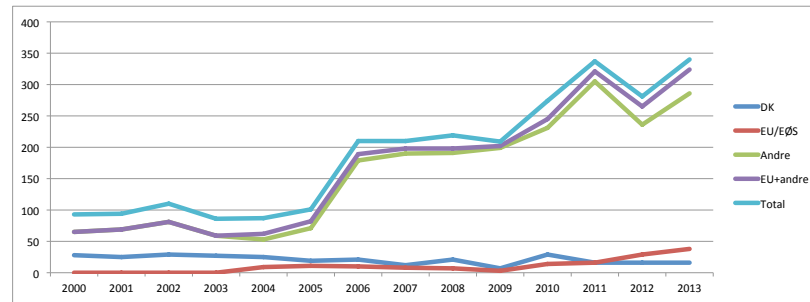
	DK	EU/EØS	Andre	EU+andre	Total	SKIBE
2000	80	3	56	59	139	504
2001	84	4	26	30	114	474
2002	83	4	32	36	119	445
2003	78	7	29	36	114	435
2004	83	6	62	68	151	417
2005	84	2	66	68	152	405
2006	90	2	52	54	144	422
2007	77	3	23	26	103	413
2008	56	2	27	29	85	444
2009	37	0	30	30	67	465
2010	39	0	28	28	67	505
2011	35	0	27	27	62	540
2012	27	2	17	19	46	539
2013	28	4	16	20	48	519
2014						
2015						
2016						



60

Servicepersonale

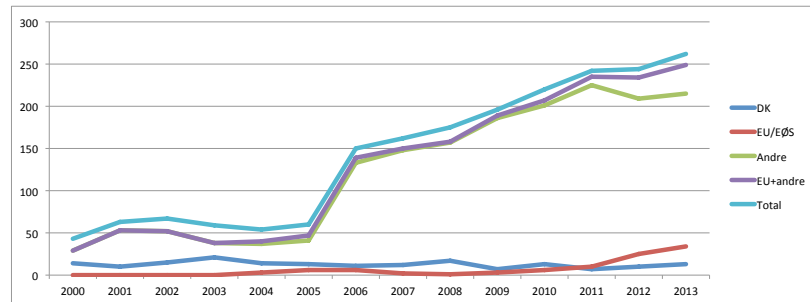
	DK	EU/EØS	Andre	EU+andre	Total	SKIBE
2000	28	0	65	65	93	504
2001	25	0	69	69	94	474
2002	29	0	81	81	110	445
2003	27	0	59	59	86	435
2004	25	9	53	62	87	417
2005	19	11	71	82	101	405
2006	21	10	179	189	210	422
2007	12	8	190	198	210	413
2008	21	7	191	198	219	444
2009	7	3	199	202	209	465
2010	29	14	231	245	274	505
2011	16	16	305	321	337	540
2012	16	29	236	265	281	539
2013	16	38	286	324	340	519
2014						
2015						
2016						



61

Steward/stewardesse

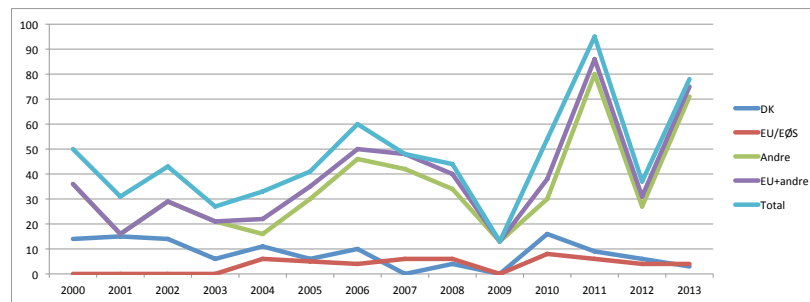
	DK	EU/EØS	Andre	EU+andre	Total	SKIBE
2000	14	0	29	29	43	504
2001	10	0	53	53	63	474
2002	15	0	52	52	67	445
2003	21	0	38	38	59	435
2004	14	3	37	40	54	417
2005	13	6	41	47	60	405
2006	11	6	133	139	150	422
2007	12	2	148	150	162	413
2008	17	1	157	158	175	444
2009	7	3	186	189	196	465
2010	13	6	201	207	220	505
2011	7	10	225	235	242	540
2012	10	25	209	234	244	539
2013	13	34	215	249	262	519
2014						
2015						
2016						



62

Servicepersonale

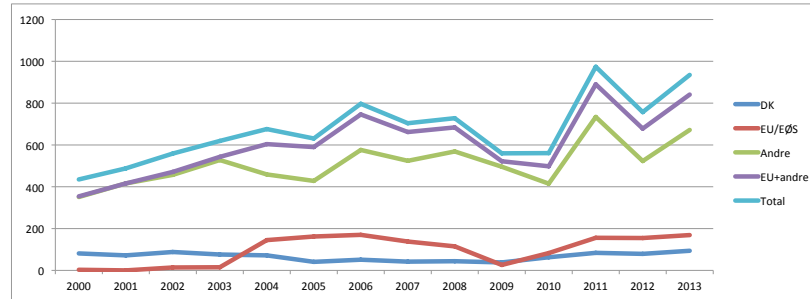
	DK	EU/EØS	Andre	EU+andre	Total	SKIBE
2000	14	0	36	36	50	504
2001	15	0	16	16	31	474
2002	14	0	29	29	43	445
2003	6	0	21	21	27	435
2004	11	6	16	22	33	417
2005	6	5	30	35	41	405
2006	10	4	46	50	60	422
2007	0	6	42	48	48	413
2008	4	6	34	40	44	444
2009	0	0	13	13	13	465
2010	16	8	30	38	54	505
2011	9	6	80	86	95	540
2012	6	4	27	31	37	539
2013	3	4	71	75	78	519
2014						
2015						
2016						



63

Andet personale

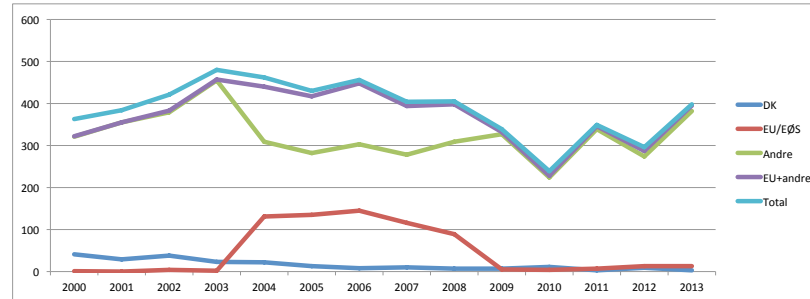
	DK	EU/EØS	Andre	EU+andre	Total	SKIBE
2000	81	3	351	354	435	504
2001	72	0	416	416	488	474
2002	88	14	457	471	559	445
2003	76	15	528	543	619	435
2004	72	145	459	604	676	417
2005	41	162	428	590	631	405
2006	51	170	576	746	797	422
2007	42	138	524	662	704	413
2008	44	115	569	684	728	444
2009	38	26	496	522	560	465
2010	63	83	415	498	561	505
2011	84	156	734	890	974	540
2012	79	155	523	678	757	539
2013	94	169	672	841	935	519
2014						
2015						
2016						



64

Reparatører

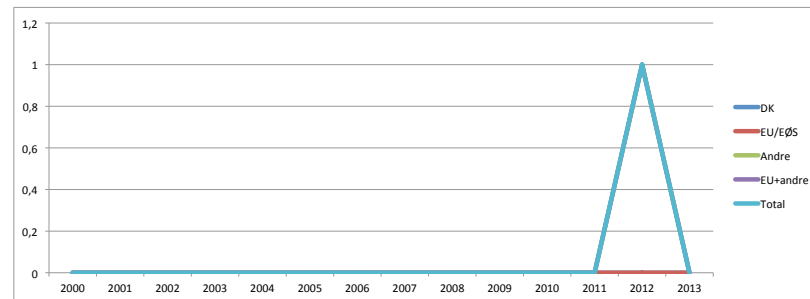
	DK	EU/EØS	Andre	EU+andre	Total	SKIBE
2000	41	1	321	322	363	504
2001	29	0	355	355	384	474
2002	38	4	379	383	421	445
2003	23	2	455	457	480	435
2004	22	131	309	440	462	417
2005	13	135	282	417	430	405
2006	8	145	303	448	456	422
2007	10	116	278	394	404	413
2008	7	89	309	398	405	444
2009	7	5	327	332	339	465
2010	11	4	224	228	239	505
2011	3	7	339	346	349	540
2012	9	13	274	287	296	539
2013	3	13	382	395	398	519
2014						
2015						
2016						



65

Ballast operator

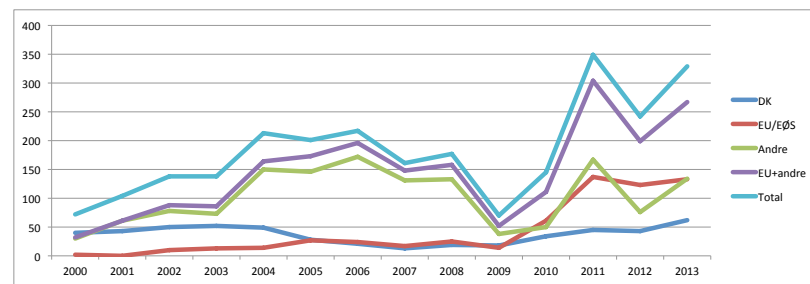
	DK	EU/EØS	Andre	EU+andre	Total	SKIBE
2000	0	0	0	0	0	504
2001	0	0	0	0	0	474
2002	0	0	0	0	0	445
2003	0	0	0	0	0	435
2004	0	0	0	0	0	417
2005	0	0	0	0	0	405
2006	0	0	0	0	0	422
2007	0	0	0	0	0	413
2008	0	0	0	0	0	444
2009	0	0	0	0	0	465
2010	0	0	0	0	0	505
2011	0	0	0	0	0	540
2012	0	0	1	1	1	539
2013	0	0	0	0	0	519
2014						
2015						
2016						



66

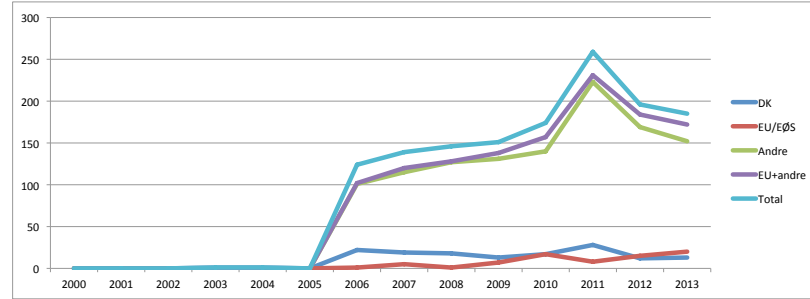
Andre tjenstgørende

	DK	EU/EØS	Andre	EU+andre	Total	SKIBE
2000	40	2	30	32	72	504
2001	43	0	61	61	104	474
2002	50	10	78	88	138	445
2003	52	13	73	86	138	435
2004	49	14	150	164	213	417
2005	28	27	146	173	201	405
2006	21	24	172	196	217	422
2007	13	17	131	148	161	413
2008	19	25	133	158	177	444
2009	18	14	38	52	70	465
2010	34	61	50	111	145	505
2011	45	137	167	304	349	540
2012	43	123	76	199	242	539
2013	62	133	134	267	329	519
2014						
2015						
2016						



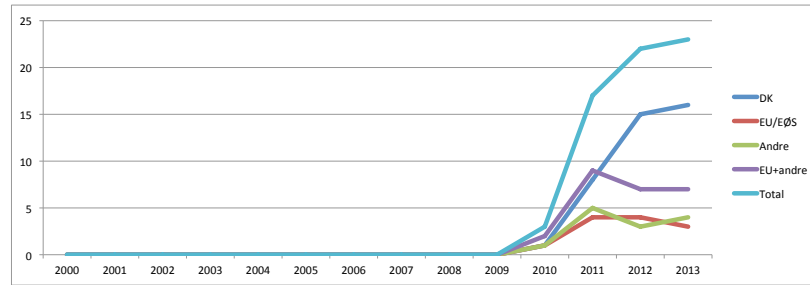
67

Elektriker	DK	EU/EØS	Andre	EU+andre	Total	SKIBE
2000	0	0	0	0	0	504
2001	0	0	0	0	0	474
2002	0	0	0	0	0	445
2003	1	0	0	0	1	435
2004	1	0	0	0	1	417
2005	0	0	0	0	0	405
2006	22	1	101	102	124	422
2007	19	5	115	120	139	413
2008	18	1	127	128	146	444
2009	13	7	131	138	151	465
2010	17	17	140	157	174	505
2011	28	8	223	231	259	540
2012	12	15	169	184	196	539
2013	13	20	152	172	185	519
2014						
2015						
2016						



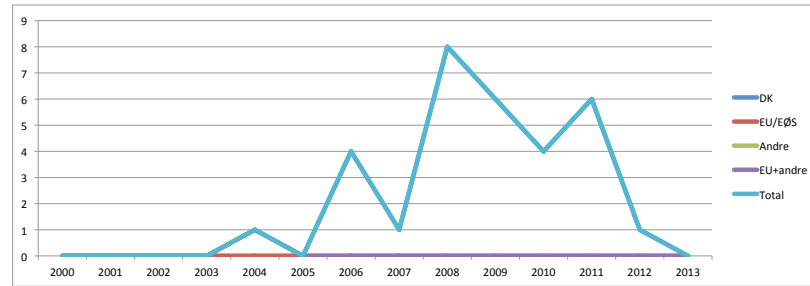
68

Kranfører	DK	EU/EØS	Andre	EU+andre	Total	SKIBE
2000	0	0	0	0	0	504
2001	0	0	0	0	0	474
2002	0	0	0	0	0	445
2003	0	0	0	0	0	435
2004	0	0	0	0	0	417
2005	0	0	0	0	0	405
2006	0	0	0	0	0	422
2007	0	0	0	0	0	413
2008	0	0	0	0	0	444
2009	0	0	0	0	0	465
2010	1	1	1	2	3	505
2011	8	4	5	9	17	540
2012	15	4	3	7	22	539
2013	16	3	4	7	23	519
2014						
2015						
2016						



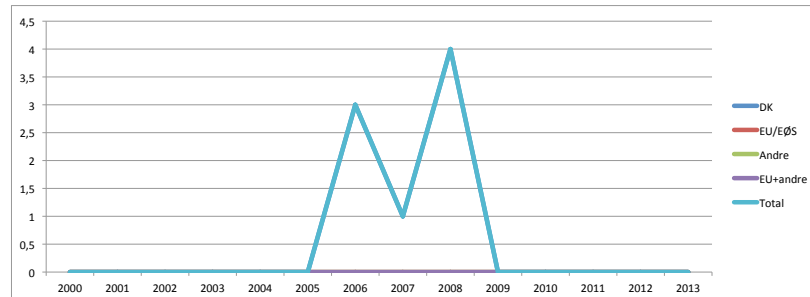
69

FISKEBESÆTNING	DK	EU/EØS	Andre	EU+andre	Total	SKIBE
2000	0	0	0	0	0	504
2001	0	0	0	0	0	474
2002	0	0	0	0	0	445
2003	0	0	0	0	0	435
2004	0	0	1	1	1	417
2005	0	0	0	0	0	405
2006	4	0	0	0	4	422
2007	1	0	0	0	1	413
2008	8	0	0	0	8	444
2009	6	0	0	0	6	465
2010	4	0	0	0	4	505
2011	6	0	0	0	6	540
2012	1	0	0	0	1	539
2013	0	0	0	0	0	519
2014						
2015						
2016						



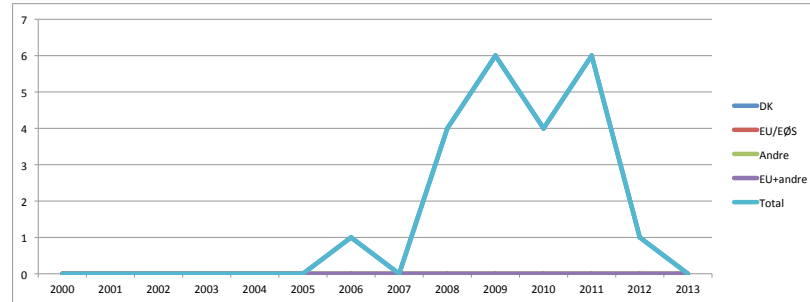
70

Fisker	DK	EU/EØS	Andre	EU+andre	Total	SKIBE
2000	0	0	0	0	0	504
2001	0	0	0	0	0	474
2002	0	0	0	0	0	445
2003	0	0	0	0	0	435
2004	0	0	0	0	0	417
2005	0	0	0	0	0	405
2006	3	0	0	0	3	422
2007	1	0	0	0	1	413
2008	4	0	0	0	4	444
2009	0	0	0	0	0	465
2010	0	0	0	0	0	505
2011	0	0	0	0	0	540
2012	0	0	0	0	0	539
2013	0	0	0	0	0	519
2014						
2015						
2016						



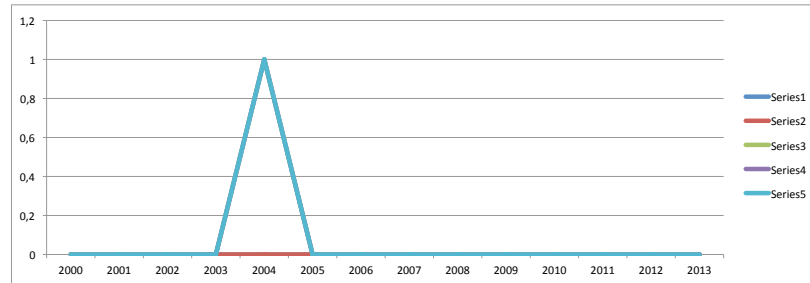
71

Fiskeskipper						
DK	EU/EØS	Andre	EU+andre	Total	SKIBE	
2000	0	0	0	0	0	504
2001	0	0	0	0	0	474
2002	0	0	0	0	0	445
2003	0	0	0	0	0	435
2004	0	0	0	0	0	417
2005	0	0	0	0	0	405
2006	1	0	0	0	1	422
2007	0	0	0	0	0	413
2008	4	0	0	0	4	444
2009	6	0	0	0	6	465
2010	4	0	0	0	4	505
2011	6	0	0	0	6	540
2012	1	0	0	0	1	539
2013	0	0	0	0	0	519
2014						
2015						
2016						



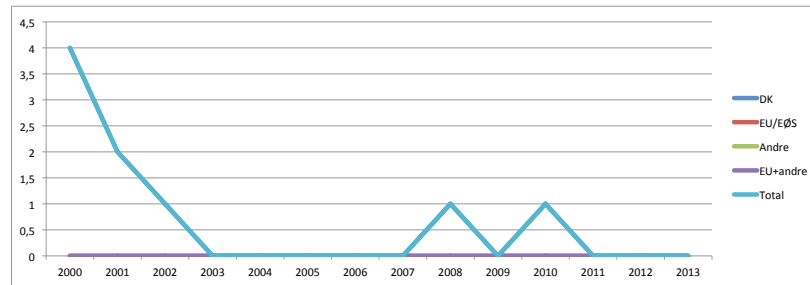
72

Andre tjenstgørende Fisk						
DK	EU/EØS	Andre	EU+andre	Total	SKIBE	
2000	0	0	0	0	0	504
2001	0	0	0	0	0	474
2002	0	0	0	0	0	445
2003	0	0	0	0	0	435
2004	0	0	1	1	1	417
2005	0	0	0	0	0	405
2006	0	0	0	0	0	422
2007	0	0	0	0	0	413
2008	0	0	0	0	0	444
2009	0	0	0	0	0	465
2010	0	0	0	0	0	505
2011	0	0	0	0	0	540
2012	0	0	0	0	0	539
2013	0	0	0	0	0	519
2014						
2015						
2016						



73

IKKE TJENSTGØRENDE (unge i familiepleje)						
DK	EU/EØS	Andre	EU+andre	Total	SKIBE	
2000	4	0	0	0	4	504
2001	2	0	0	0	2	474
2002	1	0	0	0	1	445
2003	0	0	0	0	0	435
2004	0	0	0	0	0	417
2005	0	0	0	0	0	405
2006	0	0	0	0	0	422
2007	0	0	0	0	0	413
2008	1	0	0	0	1	444
2009	0	0	0	0	0	465
2010	1	0	0	0	1	505
2011	0	0	0	0	0	540
2012	0	0	0	0	0	539
2013	0	0	0	0	0	519
2014						
2015						
2016						



74

UOPLYST STILLING						
DK	EU/EØS	Andre	EU+andre	Total	SKIBE	
2000	0	0	0	0	0	504
2001	0	0	0	0	0	474
2002	0	0	0	0	0	445
2003	0	0	0	0	0	435
2004	1	0	0	0	1	417
2005	0	0	0	0	0	405
2006	0	0	0	0	0	422
2007	0	0	2	2	2	413
2008	0	1	3	4	4	444
2009	1	0	0	0	1	465
2010	5	0	4	4	9	505
2011	9	1	2	3	12	540
2012	0	0	0	0	0	539
2013	0	0	0	0	0	519
2014						
2015						
2016						

